

Display Integration Technologies For Rugged Applications

- Construction: Industrial & MIL-SPEC / COTS / C300 Solid bearing slide rails / Locking Front Face
- Displays: 10" to 65" LED Backlit LCD with Anti-Glare, Up to 4K Resolution, High Bright
- Switches: DisplayPort / VGA / DVI / HDMI / RJ45
- Options: CAC Card Reader / Resistive or PCAP Touch / Optical Bonded Display
- Configurations: Rackmount / Storm Case / Transit Case / Multi-Head Display Systems / EMI Hardend
- TAA Compliant / Made in USA

760.599.9225 | www.DITHD.com | Cage Code 787R6 | sales@DITHD.com

1357 Rocky Point Dr., Oceanside CA 92056



RD1U Series Rackmount KVM Consoles

RD1U-CAT	Clamshell KVM Consoles
RD1U-CxT	Side-Mount Clamshell KVM Consoles
RD1U-F	Lay-Flat KVM Consoles
RD1U-S	Split Display KVM Consoles



RD1U-CAT



RD1U-CxT



RD1U-F



RD1U-S

RDxU Series Rackmount KVM Consoles

RD2U-S	Split Display KVM Consoles
RD3U-F	Multi-Head HYDRA KVM Consoles
RD4U-F	Quad-Head HYDRA KVM Consoles



RD2U-S



RD3U-Fx2



RD3U-Fx3



RD4U-Fx4

PDDx Series Pivot Display Drawers

PDD1-T	Transit Case Pivot Displays
PDD2-T	Lay-Flat Pivot Displays
PDD2-U	Under-Mount Pivot Displays
PDD3-F	Multi-Head HYDRA Displays



PDD1-T



PDD2-T



PDD2-U



PDD3-F

RDKB Series Rack Drawer Keyboards

RDBK-R	Rugged Rackmount Keyboards
RDKB-T	Transit-Case Mount Keyboards



RDBK-R



RDKB-T



Transit Cases Available

DTS Series Display & Touch Systems

DTS-OF	Open-Frame Displays
DTS-OR	On-Rack Displays
DTS-PM	Panel-Mount Displays
DTS-RA	Aluminum Rackmount Displays
DTS-RS	Steel Rackmount Displays



DTS-OF



DTS-OR



DTS-PM



DTS-RA



DTS-RS

PPC Series Rugged Panel PC's

PPC-EXP	Explosion-Proof Panel PC's
PPC-IN	Industrial Panel PC's
PPC-SS	Stainless Steel Panel PC's
PPC-LC	Basic Panel PC's



PPC-EXP



PPC-IN



PPC-SS



PPC-LC

MMR Series Mobile Monitor Rugged

MMR-E	3G SDI Broadcast Displays
MMR-D	Vectorscope / Waveform / 3G+6G SDI
MMR-P	IP67 Submersible Mobile Displays
MMR-Q	Outdoor Drone High Bright Displays
MMR-Ux	Multi-Head HYDRA Mobile Displays



MMR-Ux
Ultra **HYDRA** Series



MMR-E
Elite



MMR-D
Dionysus



MMR-P
Poseidon



MMR-Q
Quantum

MLM Series Mobile Laptop Monitor

MLMx2	IP65 Multi-Head HYDRA Displays
MLMx3	IP65 Multi-Head HYDRA Displays



MLMx3

MLMx2

MGP Series Mobile KVM Console

MGP173LC	Mobile Graphics Platform
-----------------	--------------------------



MGP173LC

MIL-SPEC

Rugged Displays

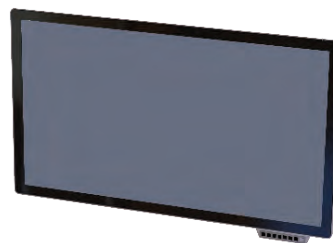
MD	MIL-SPEC Panel Mount Displays
MM	MIL-SPEC Displays
MT	MIL-SPEC Touch Displays
UHD	MIL-SPEC Desktop Displays



MD
Military Direct-Mount Monitors



MM
Military Monitors



MT
Military Touch Monitors



UHD
Tactical Desktop Monitors

MIL-SPEC

Rackmount KVM Consoles

MRxx	MIL-SPEC Clamshell KVM Consoles
MR2xx	MIL-SPEC Split Display KVM Consoles
MR3xx	MIL-SPEC Multi-Head HYDRA KVM Consoles
MR4xx	MIL-SPEC Quad-Head HYDRA KVM Consoles



MRxx
Military RD1U



MR2xx
Military RD2U



MR3xx
Military RD3U



MR4xx
Military RD4U

MIL-SPEC

Rackmount Displays

MP1	MIL-SPEC Pivot Displays
MP2	MIL-SPEC Lay-Flat Pivot Displays
MPU	MIL-SPEC Under-Mount Pivot Displays
MP3	MIL-SPEC Multi-Head HYDRA Displays



MP1
Military Pivot



MP2
Military Lay-Flat



MPU
Military Under-Mount



MP3
Military Multi-Head **HYDRA**

MMR Series

Mobile Monitor Rugged

MMR-SC	Mobile Monitor Storm Case
MMR-SCx	Mobile Multi-Head HYDRA Storm Case



MMR-SC



MMR-SCx



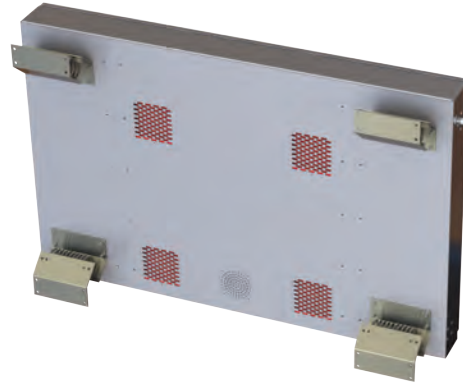
Engineered
Solutions

MIL-SPEC System Enclosures

MLX | MIL-SPEC System Enclosures



MLX (Front)
Military System Enclosures



MLX (Rear)
Military System Enclosures

MIL-SPEC Mobile KVM Console

MGP173Mx | MIL-SPEC Mobile Graphics Platform



MGP173Mx

MIL-SPEC Rackmount Keyboards

MKx | Rackmount Keyboards

MK2x | Transit Case Keyboards



MKx
Military RDKB



MK2x
Military RDKB2U

SPECS

	FHD	High Bright FHD
Part Number:	101W	101HB
Size:	10.1"	10.1"
Resolution:	1280x800	1280x800
Aspect Ratio:	16:10	16:10
Display Colors:	262K/16.2M	262K/16.2M
Brightness:	500	1200
Contrast Ratio:	800:1	800:1
Response Time:	14ms	13ms
Pixel Pitch:	0.1695x0.1695	0.1695x0.1695
Viewing Angle:	85/85/85/85	88/88/88/88
Color Gamut :	52%	73%
Operating Temp:	-20° to +70°C	-30° to +80°C
Storage Temp:	-25° to +70°C	-40° to +85°C



COMPATIBLE

DTS Series	Industrial Displays
MMR Series	Mobile Monitor Rugged
MM Series	Military Monitor

PARTNUMBER

XXXX	-	XXXX	101HB	XXX	XXXX	XX	XX
Rack Drawer Unit Size		Unit Series & Depth	LCD Display	Keyboard & Mouse	Video/Switch Controller	Front Face	Lens Option



DTS
Displays



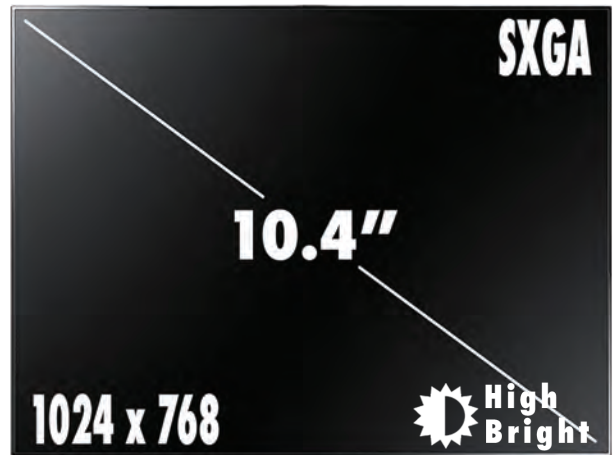
MMR
Mobile Monitor Rugged



MM
Military Monitor

SPECS

	SXGA	High Bright SXGA
Part Number:	104L	104HB
Size:	10.4"	10.4"
Resolution:	1024x768	1024x768
Aspect Ratio:	4:3	4:3
Display Colors:	262K/16.2M	262K/16.2M
Brightness:	470	1300
Contrast Ratio:	3000:1	1000:1
Response Time:	20ms	35ms
Pixel Pitch:	0.205x0.205	0.205x0.205
Viewing Angle:	89/89/89/89	88/88/88/88
Color Gamut :	60%	50%
Operating Temp:	-30° to +80°C	-30° to +80°C
Storage Temp:	-30° to +80°C	-40° to +85°C



COMPATIBLE

DTS Series	Industrial Displays
MMR Series	Mobile Monitor Rugged
MM Series	Military Monitor

PARTNUMBER

XXXX	-	XXXX	104HB	XXX	XXXX	XX	XX
Rack Drawer Unit Size		Unit Series & Depth	LCD Display	Keyboard & Mouse	Video/Switch Controller	Front Face	Lens Option



DTS
Displays



MMR
Mobile Monitor Rugged



MM
Military Monitor

SPECS

Part Number:	121HB - High Bright FHD
Size:	12.1"
Resolution:	1280x800
Aspect Ratio:	16:10
Display Colors:	262K/16.2M
Brightness:	1500
Contrast Ratio:	1000:1
Response Time:	25ms
Pixel Pitch:	0.204x0.2045
Viewing Angle:	89/89/89/89
Color Gamut :	73%
Operating Temp:	-30° to +85°C
Storage Temp:	-30° to +85°C



COMPATIBLE

DTS Series	Industrial Displays
MMR Series	Mobile Monitor Rugged
MM Series	Military Monitor

PARTNUMBER

XXXX	-	XXXX	121HB	XXX	XXXX	XX	XX
Rack Drawer Unit Size		Unit Series & Depth	LCD Display	Keyboard & Mouse	Video/Switch Controller	Front Face	Lens Option



DTS
Displays



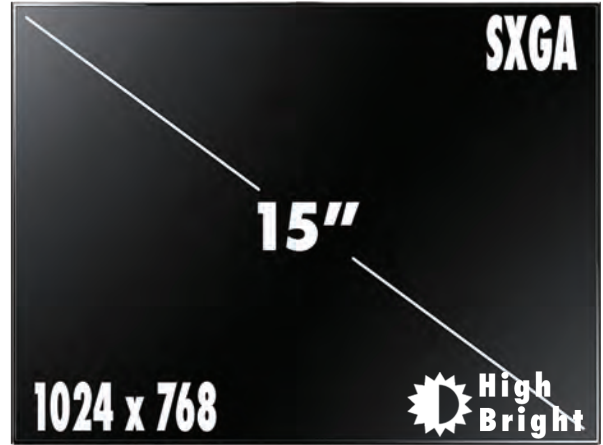
MMR
Mobile Monitor Rugged



MM
Military Monitor

SPECS

	SXGA	High Bright SXGA
Part Number:	15L	15HB
Size:	15"	15"
Resolution:	1024x768	1024x768
Aspect Ratio:	4:3	4:3
Display Colors:	262K/16.2M	262K/16.2M
Brightness:	800	1800
Contrast Ratio:	1000:1	800:1
Response Time:	25ms	6ms
Pixel Pitch:	0.297x0.297	0.297x0.297
Viewing Angle:	89/89/89/89	80/80/70/80
Color Gamut :	60%	60%
Operating Temp:	-20° to +70°C	-30° to +70°C
Storage Temp:	-20° to +70°C	-30° to +70°C



COMPATIBLE

DTS Series	Industrial Displays
MMR Series	Mobile Monitor Rugged
MM Series	Military Monitor

PARTNUMBER

XXXX	-	XXXX	15HB	XXX	XXXX	XX	XX
Rack Drawer Unit Size		Unit Series & Depth	LCD Display	Keyboard & Mouse	Video/Switch Controller	Front Face	Lens Option



DTS
Displays



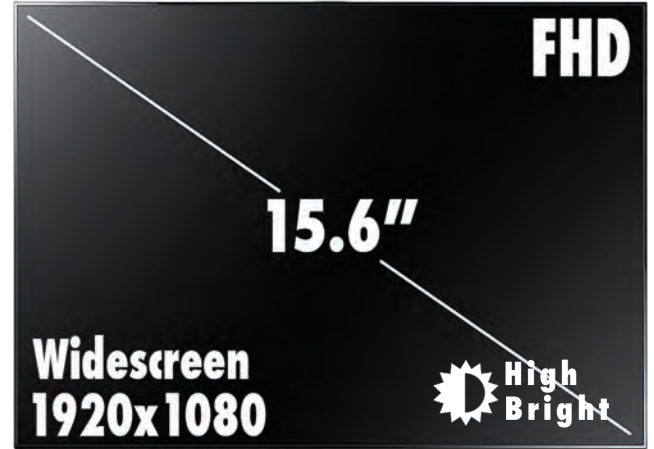
MMR
Mobile Monitor Rugged



MM
Military Monitor

SPECS

	FHD	High Bright FHD
Part Number:	156W	156HB
Size:	15.6"	15.6"
Resolution:	1920x1080	1920x1080
Aspect Ratio:	16:9	16:9
Display Colors:	16.7M	16.7M
Brightness:	600	1500
Contrast Ratio:	800:1	1000:1
Response Time:	30ms	25ms
Pixel Pitch:	.17925x.17925	.17925x.17925
Viewing Angle:	80/80/80/65	89/89/89/89
Color Gamut :	76%	72%
Operating Temp:	0° to +70°C	-30° to +85°C
Storage Temp:	-30° to +70°C	-30° to +85°C



COMPATIBLE

RD1U Series	Rackmount KVM Consoles
MR Series	MIL-SPEC Rackmount KVM Consoles
DTS Series	Industrial Displays
MMR Series	Mobile Monitor Rugged
MM Series	Military Monitor

PARTNUMBER

XXXX	-	XXXX	156HB	XXX	XXXX	XX	XX
Rack Drawer Unit Size		Unit Series & Depth	LCD Display	Keyboard & Mouse	Video/Switch Controller	Front Face	Lens Option



Rackmount
KVM Console



DTS
Displays



MMR
Mobile Monitor Rugged



MM
Military Monitor

SPECS

	SXGA	High Bright SXGA
Part Number:	17LH	17HB
Size:	17"	17"
Resolution:	1280x1024	1280x1024
Aspect Ratio:	5:4	5:4
Display Colors:	16.7M	16.7M
Brightness:	350	1600
Contrast Ratio:	800:1	800:1
Response Time:	20ms	15ms
Pixel Pitch:	0.264x0.264	0.264x0.264
Viewing Angle:	80/80/60/80	85/85/80/80
Color Gamut :	72%	72%
Operating Temp:	-30° to +85°C	-20° to +65°C
Storage Temp:	-30° to +85°C	-30° to +70°C



COMPATIBLE

RD1U Series	Rackmount KVM Consoles
MR Series	MIL-SPEC Rackmount KVM Consoles
DTS Series	Industrial Displays
MM Series	Military Monitor

PARTNUMBER

XXXX	-	XXXX	17HB	XXX	XXXX	XX	XX
Rack Drawer Unit Size		Unit Series & Depth	LCD Display	Keyboard & Mouse	Video/Switch Controller	Front Face	Lens Option



Rackmount
KVM Console



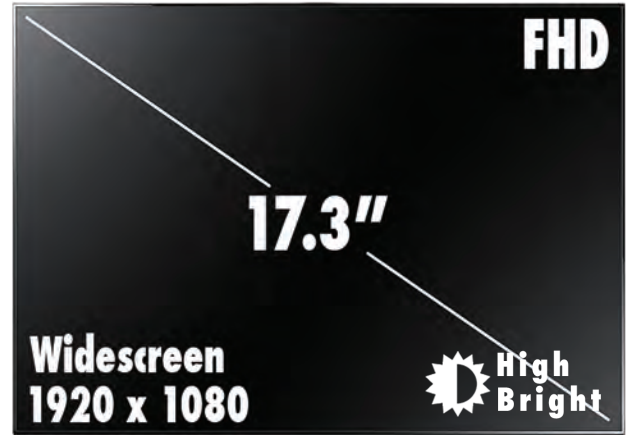
DTS
Displays



MM
Military Monitor

SPECS

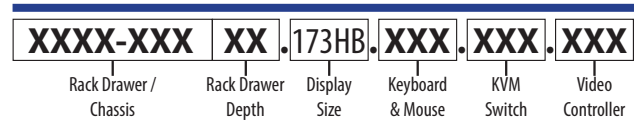
	FHD	High Bright FHD
Part Number:	173W	173HT
Size:	17.3"	17.3"
Resolution:	1920x1080	1920x1080
Aspect Ratio:	16:9	16:9
Display Colors:	16.7M	16.7M
Brightness:	400	1200
Contrast Ratio:	600:1	1700:1
Response Time:	20ms	40ms
Pixel Pitch:	0.1989x0.1989	0.1989x0.1989
Viewing Angle:	80/80/60/80	88/88/88/88
Color Gamut :	72%	72%
Operating Temp:	0° to +70°C	-30° to +85°C
Storage Temp:	-20° to +70°C	-40° to +85°C



COMPATIBLE

RD1U Series	Rackmount KVM Consoles
RD2U Series	Rackmount KVM Consoles
MR Series	MIL-SPEC Rackmount KVM Consoles
MR2 Series	MIL-SPEC Rackmount KVM Consoles
DTS Series	Industrial Displays
PDD Series	Pivot Display Drawers
MMR Series	Mobile Monitor Rugged
MM Series	Military Monitor

PART NUMBER



Rackmount KVM Console



DTS Displays



PDD Pivot Display



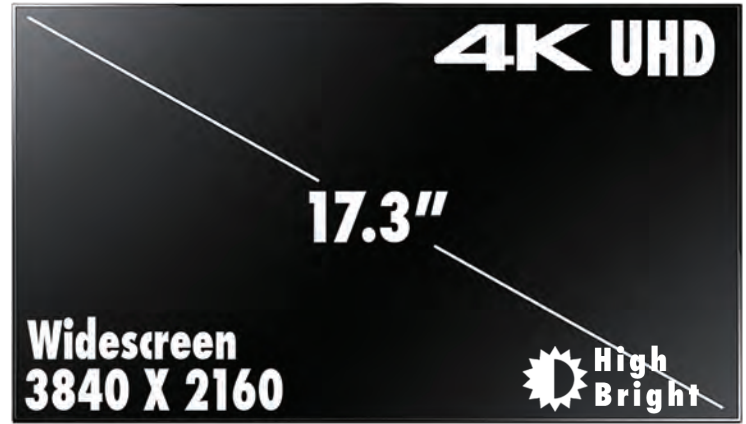
MMR Mobile Monitor



MM Military Monitor

SPECS

	UHD	High Bright UHD
Part Number:	173U	173HU
Size:	17.3"	17.3"
Resolution:	3840x2160	3840x2160
Aspect Ratio:	16:9	16:9
Display Colors:	1.07B	1.07B
Brightness:	610	1300
Contrast Ratio:	600:1	12000:1
Response Time:	25ms	35ms
Pixel Pitch:	.09945x.09945	.09945x.09945
Viewing Angle:	85/85/85/85	85/85/85/85
Color Gamut :	101%	100%
Operating Temp:	0° to +50°C	-20° to +70°C
Storage Temp:	-20° to +60°C	-30° to +80°C



COMPATIBLE

RD1U Series	Rackmount KVM Consoles
RD2U Series	Rackmount KVM Consoles
MR Series	MIL-SPEC Rackmount KVM Consoles
MR2 Series	MIL-SPEC Rackmount KVM Consoles
DTS Series	Industrial Displays
PDD Series	Pivot Display Drawers
MMR Series	Mobile Monitor Rugged
MM Series	Military Monitor

PART NUMBER

XXXX-XXX	XX	173U	XXX	XXX	XXX
Rack Drawer / Chassis	Rack Drawer Depth	Display Size	Keyboard & Mouse	KVM Switch	Video Controller



Rackmount KVM Console



DTS Displays



PDD Pivot Display



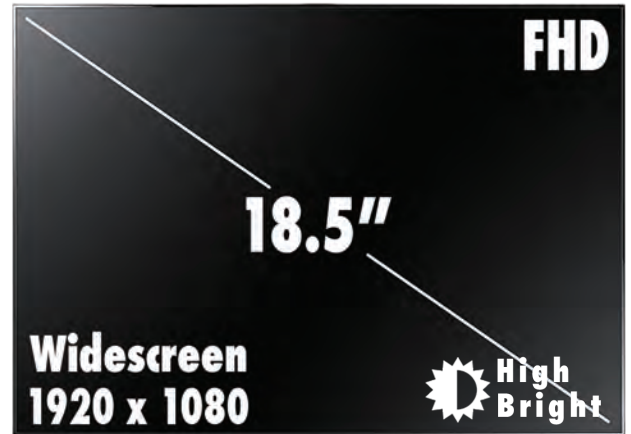
MMR Mobile Monitor



MM Military Monitor

SPECS

Part Number:	185HB - High Bright FHD
Size:	18.5"
Resolution:	1920x1080
Aspect Ratio:	16:9
Display Colors:	16.7M
Brightness:	1800
Contrast Ratio:	1000:1
Response Time:	10ms
Pixel Pitch:	0.213x0.213
Viewing Angle:	89/89/89/89
Color Gamut :	73%
Operating Temp:	-20° to +60°C
Storage Temp:	-20° to +60°C



COMPATIBLE

DTS Series	Industrial Displays
MMR Series	Mobile Monitor Rugged
MM Series	Military Monitor

PARTNUMBER

XXXX	-	XXXX	185HB	XXX	XXXX	XX	XX
Rack Drawer Unit Size		Unit Series & Depth	LCD Display	Keyboard & Mouse	Video/Switch Controller	Front Face	Lens Option



DTS
Displays



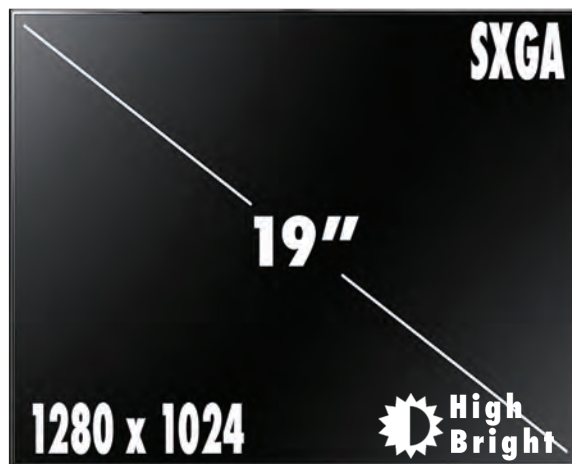
MMR
Mobile Monitor Rugged



MM
Military Monitor

SPECS

	SXGA	High Bright SXGA
Part Number:	19LH	19HB
Size:	19"	19"
Resolution:	1280x1024	1280x1024
Aspect Ratio:	5:4	5:4
Display Colors:	16.7M	16.7M
Brightness:	350	1600
Contrast Ratio:	1000:1	1000:1
Response Time:	8ms	10ms
Pixel Pitch:	0.294x0.294	0.294x0.294
Viewing Angle:	85/85/80/80	85/85/80/80
Color Gamut :	72%	72%
Operating Temp:	-30° to +85°C	-30° to +70°C
Storage Temp:	-30° to +85°C	-30° to +70°C



COMPATIBLE

RD1U Series	Rackmount KVM Consoles
RD2U Series	Rackmount KVM Consoles
MR Series	MIL-SPEC Rackmount KVM Consoles
MR2 Series	MIL-SPEC Rackmount KVM Consoles
DTS Series	Industrial Displays
PDD Series	Pivot Display Drawers
MMR Series	Mobile Monitor Rugged
MM Series	Military Monitor

PART NUMBER

XXXX-XXX	XX	19HB	XXX	XXX	XXX
Rack Drawer / Chassis	Rack Drawer Depth	Display Size	Keyboard & Mouse	KVM Switch	Video Controller



Rackmount KVM Console



DTS Displays



PDD Pivot Display



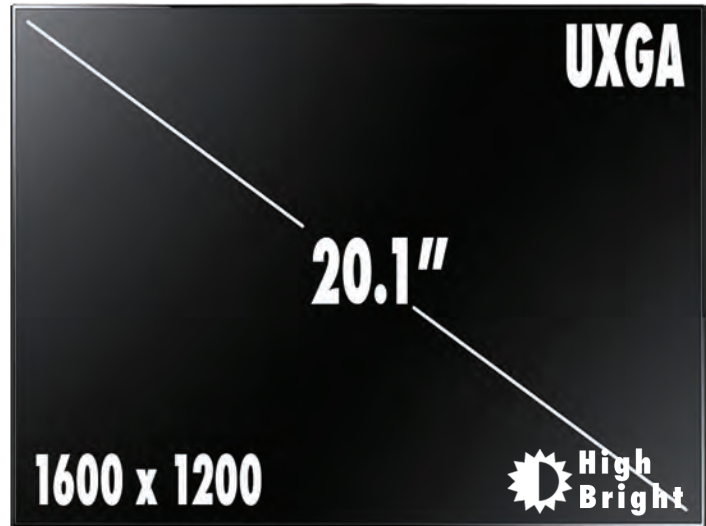
MMR Mobile Monitor



MM Military Monitor

SPECS

	UXGA	High Bright UXGA
Part Number:	20L	20HB
Size:	20.1"	20.1"
Resolution:	1600x1200	1600x1200
Aspect Ratio:	4:3	4:3
Display Colors:	16.7M	16.7M
Brightness:	260	1000
Contrast Ratio:	1400:1	800:1
Response Time:	30ms	8ms
Pixel Pitch:	0.255x0.255	0.255x0.255
Viewing Angle:	85/85/85/85	89/89/89/89
Color Gamut :	71%	72%
Operating Temp:	0° to +50°C	0° to +50°C
Storage Temp:	-20° to +60°C	-20° to +60°C



COMPATIBLE

DTS Series	Industrial Displays
PDD Series	Pivot Display Drawers
MMR Series	Mobile Monitor Rugged
MM Series	Military Monitor

PARTNUMBER

XXXX	-	XXXX	20HB	XXX	XXXX	XX	XX
Rack Drawer Unit Size		Unit Series & Depth	LCD Display	Keyboard & Mouse	Video/Switch Controller	Front Face	Lens Option



DTS
Displays



PDD
Pivot Display



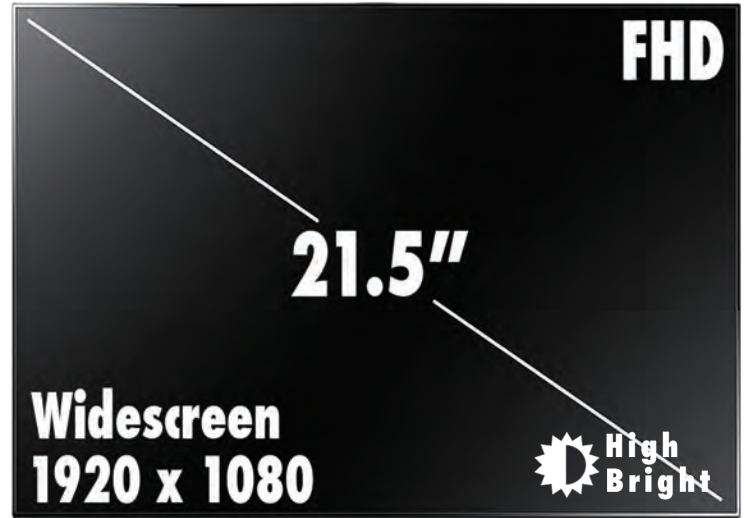
MMR
Mobile Monitor Rugged



MM
Military Monitor

SPECS

	FHD	High Bright FHD
Part Number:	215W.L01	215HB
Size:	21.5"	21.5"
Resolution:	1920x1080	1920x1080
Aspect Ratio:	16:9	16:9
Display Colors:	16.7M	16.7M
Brightness:	330	330
Contrast Ratio:	1000:1	1000:1
Response Time:	6ms	6ms
Pixel Pitch:	.24875x.24875	.24875x.24875
Viewing Angle:	89/89/89/89	89/89/89/89
Color Gamut :	76%	72%
Operating Temp:	0° to +50°C	0° to +50°C
Storage Temp:	-20° to +60°C	-20° to +60°C



COMPATIBLE

DTS Series	Industrial Displays
MMR Series	Mobile Monitor Rugged
MM Series	Military Monitor

PARTNUMBER

XXXX	-	XXXX	215HB	XXX	XXXX	XX	XX
Rack Drawer Unit Size		Unit Series & Depth	LCD Display	Keyboard & Mouse	Video/Switch Controller	Front Face	Lens Option



DTS
Displays



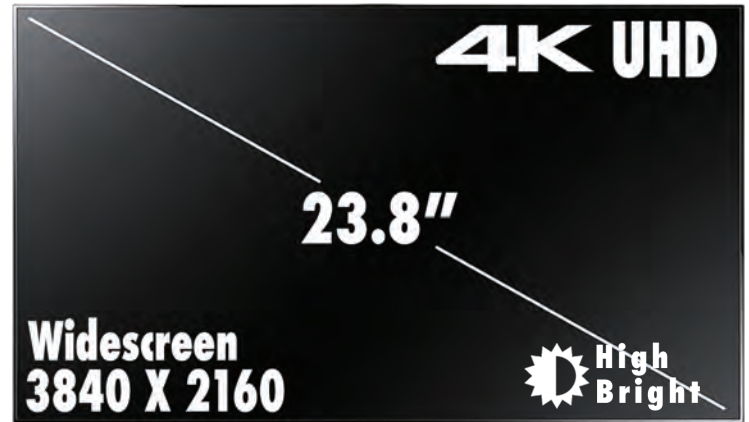
MMR
Mobile Monitor Rugged



MM
Military Monitor

SPECS

	UHD	High Bright UHD
Part Number:	238U	238UB
Size:	23.8"	23.8"
Resolution:	3840x2160	3840x2160
Aspect Ratio:	16:9	16:9
Display Colors:	1.07B	1.07B
Brightness:	540	1000
Contrast Ratio:	1000:1	1000:1
Response Time:	14ms	14ms
Pixel Pitch:	.13725x.13725	.13725x.13725
Viewing Angle:	89/89/89/89	89/89/89/89
Color Gamut :	97%	97%
Operating Temp:	0° to +50°C	0° to +50°C
Storage Temp:	-20° to +60°C	-20° to +60°C



COMPATIBLE

DTS Series	Industrial Displays
MMR Series	Mobile Monitor Rugged
MM Series	Military Monitor

PART NUMBER

XXXX	-	XXXX	238UB	XXX	XXXX	XX	XX
Rack Drawer Unit Size		Unit Series & Depth	LCD Display	Keyboard & Mouse	Video/Switch Controller	Front Face	Lens Option



DTS
Displays



MMR
Mobile Monitor Rugged



MM
Military Monitor

SPECS

Part Number:	240W.02 - WUXGA
Size:	24"
Resolution:	1920x1200
Aspect Ratio:	16:10
Display Colors:	16.7M
Brightness:	300
Contrast Ratio:	1000:1
Response Time:	14ms
Pixel Pitch:	0.270x0.270
Viewing Angle:	89/89/89/89
Color Gamut :	72%
Operating Temp:	0° to +50°C
Storage Temp:	-20° to +60°C



COMPATIBLE

DTS Series	Industrial Displays
MMR Series	Mobile Monitor Rugged
MM Series	Military Monitor

PARTNUMBER

XXXX	-	XXXX	240W.02	XXX	XXXX	XX	XX
Rack Drawer Unit Size		Unit Series & Depth	LCD Display	Keyboard & Mouse	Video/Switch Controller	Front Face	Lens Option



DTS
Displays



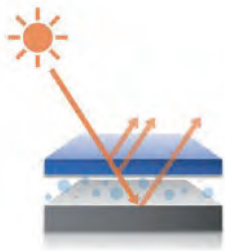
MMR
Mobile Monitor Rugged



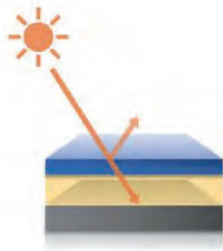
MM
Military Monitor

SPECS

Meets:	MIL-STD-461F/G (EMI)
Enhancements:	<ul style="list-style-type: none"> • Optical Bonding • ITO Glass • High Bright • PCAP / Resistive Touch • Heated Glass • NVIS Backlight
Power Input:	MIL-SPEC C90 - 2 Pin (other options)
Construction:	Anti Glair - Chem Strengthened Glass



Without
Optical Bonding



With
Optical Bonding

COMPATIBLE

MR Series	MIL-SPEC Rackmount KVM Consoles
MR2 Series	MIL-SPEC Rackmount KVM Consoles
PDD Series	Pivot Display Drawers
MM Series	Military Monitor



MR
Rackmount KVM Console



PDD
Pivot Display



MM
Military Monitor

SPECS

Grade:	Industrial
Keys:	88
Key Life:	20 Million Cycles
Pointer:	2 Button / 14mm Track Ball
TB Life:	>80km, buttons > 3M Operations
MTBF:	8.6 Million Hrs.
Approvals:	CE, VDE, cURus, FCC, VCCI, C-Tick, BSMI, WHQL, WEEE, RoHS
Operating Temp:	32° to 122°F (0° to 50°C)
Storage Temp:	-4° to 149°F (-20° to 65°C)
Interface:	USB (A2U)



A2U



FEATURES

- 2 Button / Optical (400dpi) trackball
- Mechanical keys with gold cross point contacts for high precision key action
- Programmable keys
- Fast switch-over to numeric block via Fn key
- Multiple language support available

COMPATIBLE

RD1U Series	KVM Consoles
RD2U Series	KVM Consoles
RD3U Series	KVM Consoles
RD4U Series	KVM Consoles
RDKB Series	Rackmount Keyboards

PART NUMBER

XXXX	-	XXXX	XX	A2U	XXXX	XX	XX
Rack Drawer Unit Size		Unit Series & Depth	LCD Display	Keyboard & Mouse	Video/Switch Controller	Front Face	Lens Option



B2 Series

Industrial / Cirque Glide Pad



DISPLAY INTEGRATION TECHNOLOGIES

SPECS

Grade:	Industrial
Keys:	103
Key Life:	5 Million Cycles
Pointer:	2 Button / Cirque Glide Pad
Operating Temp:	32° to 122°F (0° to 50°C)
Storage Temp:	-40° to 140°F (-40° to 60°C)
Interface:	USB (B2U)



B2U



\$

FEATURES

- Rubber blanket membrane scissor technology
- Small measurements, Light weight,
- Integrated Cirque Glide-pad allows for full mouse functionality
- Optional CAC Card Reader

COMPATIBLE

RD1U Series | KVM Consoles



PART NUMBER

XXXX-XXX	XX	XXX	B2U	XXX	XXX
Rack Drawer / Chassis	Rack Drawer Depth	Display Size	Keyboard & Mouse	KVM Switch	Video Controller

B4 Series

Industrial / Cirque Glide Pad



DISPLAY INTEGRATION TECHNOLOGIES

SPECS

Grade:	Industrial
Keys:	104
Key Life:	20 Million Cycles
Pointer:	2 Button / Cirque Glide Pad
Approvals:	CE, VDE, cURus, FCC, VCCI, C-Tick, BSMI, WHQL, WEEE, RoHS
Operating Temp:	32° to 122°F (0 to 50°C)
Storage Temp:	-4° to 149°F (-20 to 65°C)
Interface:	PS/2 (B4) or USB (B4U)



B4U



B4



FEATURES

- Single keys with Gold Crosspoint contacts for high accuracy
- Full numeric keypad
- Programmable keys
- Ultra slim 88mm in height
- Optional CAC Card Reader on RD1U Series

COMPATIBLE

RD1U Series | KVM Consoles



PARTNUMBER

XXXX	-	XXXX	XX	B4U	XXXX	XX	XX
Rack Drawer Unit Size		Unit Series & Depth	LCD Display	Keyboard & Mouse	Video/Switch Controller	Front Face	Lens Option

SPECS

Grade:	Standard
Keys:	96
Key Life:	5 Million Cycles
Pointer:	2 Button / Cirque Glide Pad
Approvals:	CE, VDE, cURus, FCC, VCCI, C-Tick, BSMI, WHQL, WEEE, RoHS
Operating Temp:	32° to 122°F (0 to 50°C)
Storage Temp:	-4° to 149°F (-20 to 65°C)
Interface:	USB (B6U)



B6U



\$

FEATURES

- Single keys with Gold Crosspoint contacts for high accuracy
- Full numeric keypad
- Programmable keys
- Ultra slim 88mm in height
- Optional CAC Card Reader on RD1U Series

COMPATIBLE

RD1U Series | KVM Consoles



PARTNUMBER

XXXX	-	XXXX	XX	B6U	XXXX	XX	XX
Rack Drawer Unit Size		Unit Series & Depth	LCD Display	Keyboard & Mouse	Video/Switch Controller	Front Face	Lens Option

H Series

Industrial Rugged / Hula Point



DISPLAY INTEGRATION TECHNOLOGIES

SPECS

Grade:	Industrial Rugged / NEMA 4X
Keys:	113
Key Life:	10 Million Cycles
Pointer:	3 Button / Hula Point
Approvals:	NEMA4X, UL60950, FCC Part 15 Class B
Operating Temp:	-4° to 140°F (-20 to 60°C)
Storage Temp:	-40° to 185°F (-40 to 85°C)
Interface:	PS/2 (H) or USB (HU)
Shock:	50G Peak, 11msec duration, 3 axis
Vibration:	POWERSPECTRALDENSITY:0.04g2/Hz FREQUENCY RANGE: 20Hz - 2kHz DURATION Of TEST PER AXIS: 3 hour

\$\$\$



FEATURES

- Industrial 113 Key Keyboard
- Integrated Hula Point pointing device
- Comes with 20 Function Keys
- 10-Key Number pad
- Made of industrial silicone rubber

COMPATIBLE

RD1U Series	KVM Consoles
RD2U Series	KVM Consoles
RD3U Series	KVM Consoles
RD4U Series	KVM Consoles
RDKB Series	Rackmount Keyboards

PARTNUMBER

XXXX	-	XXXX	XX	HU	XXXX	XX	XX
Rack Drawer Unit Size		Unit Series & Depth	LCD Display	Keyboard & Mouse	Video/Switch Controller	Front Face	Lens Option



SPECS

Grade:	Industrial / Slim
Keys:	82
Key Life:	5 Million Cycles
Pointer:	2 Button / Touch-Pad
Operating Temp:	-4° to 122°F (-20° to 60°C)
Storage Temp:	-32° to 140°F (-0° to 50°C)
Interface:	USB (I2U)



I2U



\$

FEATURES

- Rubber blanket membrane technology
- Small measurements
- Light Weight
- Optional CAC Card on RD1U Series

COMPATIBLE

RD1U Series	KVM Consoles
RD2U Series	KVM Consoles
RD3U Series	KVM Consoles
RD4U Series	KVM Consoles
RDKB Series	Rackmount Keyboards

PARTNUMBER

XXXX	-	XXXX	XX	I2U	XXXX	XX	XX
Rack Drawer Unit Size		Unit Series & Depth	LCD Display	Keyboard & Mouse	Video/Switch Controller	Front Face	Lens Option



T Series

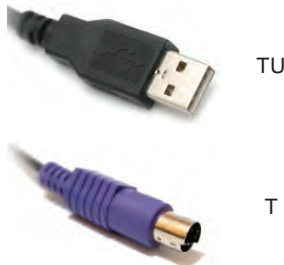
Compact / Touch Pad



DISPLAY INTEGRATION TECHNOLOGIES

SPECS

Grade:	Industrial / Compact
Keys:	113
Key Life:	20 Million Cycles
Pointer:	2 Button / Touch-Pad
Operating Temp:	32° to 122°F (0 to 50°C)
Storage Temp:	-40° to 140°F (-40 to 60°C)
Interface:	PS/2 or USB



FEATURES

The multifunctional TouchBoard is the perfect solution for limited spaces in situations requiring the functions of a 'mouse'.

COMPATIBLE

RD2U Series	KVM Consoles
RD3U Series	KVM Consoles
RD4U Series	KVM Consoles
RDKB Series	Rackmount Keyboards

PARTNUMBER

XXXX	-	XXXX	XX	TU	XXXX	XX	XX
Rack Drawer Unit Size		Unit Series & Depth	LCD Display	Keyboard & Mouse	Video/Switch Controller	Front Face	Lens Option



SPECS

Grade:	Industrial
Keys:	88
Key Life:	20 Million Cycles
Pointer:	2 Button / Glide Pad
GP Life:	10 Million Operations
MTBF:	4.9 Million Hours
Operating Temp:	32° to 140°F (0 to 60°C)
Storage Temp:	-40° to 140°F (-40 to 149°C)
Interface:	USB (OU)



OU

CHERRY  \$\$

FEATURES

- Keys w/ gold cross point contacts for high precision key action
- Programmable Keys
- Fast switch over to numeric block via Fn Key
- Multiple language Support available
- Ultra slim 18mm height

COMPATIBLE

RD1U Series	KVM Consoles
RD2U Series	KVM Consoles
RD3U Series	KVM Consoles
RD4U Series	KVM Consoles
RDKB Series	Rackmount Keyboards

PARTNUMBER

XXXX	-	XXXX	XX	OU	XXXX	XX	XX
Rack Drawer Unit Size		Unit Series & Depth	LCD Display	Keyboard & Mouse	Video/Switch Controller	Front Face	Lens Option



SPECS

Grade:	Industrial Rugged NEMA 4X
Keys:	97
Key Life:	10 Million Cycles
Pointer:	2 Button / Glide Pad
GP Life:	10 Million Operations
Interface:	USB (QU) or Backlit USB (QBU)
Approvals:	CE, FCC, ROHS, NEMA 4X
Operating Temp:	-40° to +158°F (-40° to +70°C)
Storage Temp:	-40° to 194°F (-40° to 90°C)
Compatibility:	Windows, Linex, MAC
Shock:	3x11ms pulses of 50g on each of axes
Vibration:	POWERSPECTRALDENSITY:0.04g2/Hz FREQUENCY RANGE: 20Hz - 2kHz DURATION Of TEST PER AXIS: 3 hour

\$\$\$



FEATURES

Made of industrial silicone rubber this is a full-sized keyboard with added convenience of a built-in touch pad. It's fully sealed NEMA 4X standards to be resistant to dirt, debris and water making it ideal for a harsh environment. Optional Red Backlit keyboard for low light environments on QBU model.

COMPATIBLE

RD1U Series	KVM Consoles
RD2U Series	KVM Consoles
RD3U Series	KVM Consoles
RD4U Series	KVM Consoles
RDKB Series	Rackmount Keyboards
MK17M Series	Rackmount Keyboards

PARTNUMBER

XXXX	-	XXXX	XX	QU	XXXX	XX	XX
Rack Drawer Unit Size		Unit Series & Depth	LCD Display	Keyboard & Mouse	Video/Switch Controller	Front Face	Lens Option



QU

QBU - Backlit USB



R Series

Industrial / Ultra Thin



DISPLAY INTEGRATION TECHNOLOGIES

SPECS

Grade:	Industrial / Ultra Thin
Keys:	104
Key Life:	20 Million Cycles
MTBF:	11.4 Million Hrs.
Approvals:	CE, VDE, cURus, FCC, VCCI, C-Tick, BSMI, WHQL, WEEE, RoHS
Operating Temp:	32° to 122°F (0 to 50°C)
Storage Temp:	-4° to 149°F (-20 to 65°C)
Interface:	USB (RU)



RU



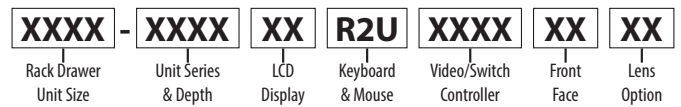
FEATURES

- Single keys with Gold Crosspoint contacts for high accuracy
- Full numeric keypad
- Programmable keys
- Ultra slim 88mm in height

COMPATIBLE

RD2U Series	KVM Consoles
RD3U Series	KVM Consoles
RD4U Series	KVM Consoles
RDKB Series	Rackmount Keyboards

PARTNUMBER



Full Size Optical Cherry Mouse (1)



Cirque Glidepoint Trackpad (2)



Logitech Wireless Mouse (3)

SPECS

Grade:	Medical / Ultra Thin
Keys:	95
Key Life:	10 Million Cycles
Pointer:	2 Button / Touch Pad
Approvals:	IP68
Operating Temp:	32° to 158°F (0 to 70°C)
Storage Temp:	-40° to 158°F (-40 to 70°C)
Interface:	USB (SU) / Backlit USB (SBU)

\$\$\$



SU

SBU - Backlit USB

FEATURES

- Cleanable, Sealed Keyboard
- Withstands Most Hospital Grade Cleaners
- Wrapped in Silicone Rubber
- Small Integrated Touchpad with 2- Button Mouse
- Optional: Backlight

COMPATIBLE

RD1U Series	KVM Consoles
RD2U Series	KVM Consoles
RD3U Series	KVM Consoles
RD4U Series	KVM Consoles
RDKB Series	Rackmount Keyboards

PARTNUMBER

XXXX	-	XXXX	XX	SU	XXXX	XX	XX
Rack Drawer Unit Size		Unit Series & Depth	LCD Display	Keyboard & Mouse	Video/Switch Controller	Front Face	Lens Option



SPECS

Grade:	Standard
Keys:	96
Key Life:	5 Million Cycles
Pointer:	N/A
Approvals:	CE, VDE, cURus, FCC, VCCI, C-Tick, BSMI, WHQL, WEEE, RoHS
Operating Temp:	32° to 122°F (0 to 50°C)
Storage Temp:	-4° to 149°F (-20 to 65°C)
Interface:	PS/2 (U) or USB (UU)



UU



U

COMPATIBLE

RD2U Series	KVM Consoles
RD3U Series	KVM Consoles
RD4U Series	KVM Consoles
RDKB Series	Rackmount Keyboards



FEATURES

- Single keys with Gold Crosspoint contacts for high accuracy
- Full numeric keypad
- Programmable keys
- Ultra slim 88mm in height
- Optional CAC Card Reader on RD1U Series

PARTNUMBER

XXXX	-	XXXX	XX	U2U	XXXX	XX	XX
Rack Drawer Unit Size		Unit Series & Depth	LCD Display	Keyboard & Mouse	Video/Switch Controller	Front Face	Lens Option



Full Size Optical Cherry Mouse (1)



Cirque Glidepoint Trackpad (2)



Logitech Wireless Mouse (3)

V Series

Industrial / Light weight



DISPLAY INTEGRATION TECHNOLOGIES

SPECS

\$\$

Grade:	Industrial / Light Weight
Keys:	103
Key Life:	5 Million Cycles
Operating Temp:	32° to 122°F (0 to 50°C)
Storage Temp:	-4° to 140°F (-20 to 60°C)
Interface:	USB (VU)



VU

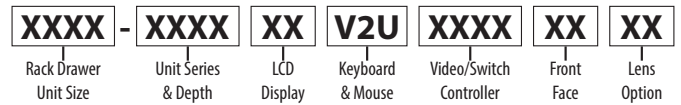
FEATURES

- Rubber blanket membrane scissor technology
- Small measurements
- Light weight
- USB interface

COMPATIBLE

RD2U Series	KVM Consoles
RD3U Series	KVM Consoles
RD4U Series	KVM Consoles
RDKB Series	Rackmount Keyboards

PARTNUMBER



Full Size Optical Cherry Mouse (1)



Cirque Glidepoint Trackpad (2)



Logitech Wireless Mouse (3)

M1 Series

MIL-SPEC / Thin / Dual Pointing Devices

DITHD

DISPLAY INTEGRATION TECHNOLOGIES

SPECS

Grade:	MIL-SPEC / Rugged NEMA 4X
Keys:	87
Key Life:	10 Million Cycles
Pointer:	dual pointing devices
Interface:	PS/2 (M1) or USB (M1U)
Approvals:	NEMA4X, UL60950, FCC Part 15 Class B
Operating Temp:	-25° to +122°F (-32 to 60°C)
Storage Temp:	-40° to 185°F (-40 to 85°C)
Humidity:	100% (when properly installed)
Shock:	50G Peak 11msec Duration, 3 axis
Vibration:	POWERSPECTRALDENSITY: 0.04g ² /Hz FREQUENCY RANGE: 20Hz - 2kHz DURATION OF TEST PER AXIS: 3 hour



M1U



M1

COMPATIBLE

MR Series | KVM Consoles



\$\$\$\$



FEATURES

- Pointer: dual pointing devices:
 - Integrated FSR pointing device
 - 2 Button track-pad
- MIL-461G standards, excellent performance for conducted and radiated emissions, including 50 volts/meter.
- MIL-STD-810F, resistant to sand, debris and liquids.
- Adjustable green LED backlighting
- Optional NVIS Green B.

PARTNUMBER

XXXX	-	XXXX	XX	M1U	XXXX	XX	XX
Rack Drawer Unit Size		Unit Series & Depth	LCD Display	Keyboard & Mouse	Video/Switch Controller	Front Face	Lens Option

SPECS

Grade:	MIL-SPEC / Rugged NEMA 4X
Keys:	87
Key Life:	10 Million Cycles
Pointer:	2 button / FSR
Interface:	PS/2 (M2) or USB (M2U)
Approvals:	NEMA4X, UL60950, FCC Part 15 Class B
Operating Temp:	-40° to 122°F (-40 to 60°C)
Storage Temp:	-40° to 194°F (-40 to 90°C)
Humidity:	100% (when properly installed)
Shock:	50G Peak 11msec Duration, 3 axis
Vibration:	POWERSPECTRALDENSITY:0.04g2/Hz FREQUENCY RANGE: 20Hz - 2kHz DURATION Of TEST PER AXIS: 3 hour



M2U



M2

COMPATIBLE

MR Series	MIL-SPEC KVM Consoles
MR2 Series	MIL-SPEC KVM Consoles
MK17 Series	MIL-SPEC Rackmount Keyboard
RD3U Series	Rackmount KVM Consoles
RD4U Series	Rackmount Keyboards



\$\$

FEATURES

- Integrated 2 Button FSR pointing device
- MIL-461G standards, excellent performance for conducted and radiated emissions, including 50 volts/meter.
- Optional NVIS Compliant – Green B backlighting
- Backlight controlled by external PWM signal
- Excellent performance for conducted and radiated emissions, including RS103 and 200 volts/meter

PARTNUMBER

XXXX	-	XXXX	XX	M2U	XXXX	XX	XX
Rack Drawer Unit Size		Unit Series & Depth	LCD Display	Keyboard & Mouse	Video/Switch Controller	Front Face	Lens Option



M3 Series

MIL-SPEC / 3 Button FSR



DISPLAY INTEGRATION TECHNOLOGIES

SPECS

\$\$\$

Grade:	MIL-SPEC / Rugged NEMA 4X
Keys:	102
Key Life:	10 Million Cycles
Pointer:	3 Button FSR
Interface:	PS/2 (M3) or USB (M3U)
Approvals:	NEMA4X, UL60950, FCC Part 15 Class B
Operating Temp:	-40° to +158°F (-40 to +70°C)
Storage Temp:	-40° to 194°F (-40 to 90°C)
Humidity:	100% (when properly installed)
Shock:	50G Peak 11msec Duration, 3 axis
Vibration:	POWERSPECTRALDENSITY: 0.04g2/Hz FREQUENCY RANGE: 20Hz - 2kHz DURATION OF TEST PER AXIS: 3 hour



M3U



M3

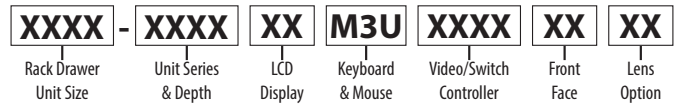
FEATURES

- 12 Function Keys
- Integrated Force Sensing Resistor Pointing Device (FSR)
- USB and PS/2 configurations available
- MS Windows Function Keys,
- MIL-STD-461G Resistant to sand, debris and the elements
- Large numeric pad on this model allows for easy data entry

COMPATIBLE

MR Series	KVM Consoles
MR2 Series	KVM Consoles
MK17 Series	KVM Consoles
RD3U Series	KVM Consoles
RD4U Series	Rackmount Keyboards

PARTNUMBER



M4 Series

MIL-SPEC / 3 Button Track Ball

DITHD

DISPLAY INTEGRATION TECHNOLOGIES

SPECS

Grade:	MIL-SPEC / Rugged
Keys:	102
Key Life:	10 Million Cycles
Pointer:	3 Button 1-3/8" Track Ball
Interface:	PS/2 (M4) USB (M4U) / Backlit (M4BU)
Approvals:	MIL-STD-810 / IP65
Operating Temp:	-0° to +162°F (-40 to +71°C)
Storage Temp:	-67° to 185°F (-55 to 85°C)
Humidity:	95%
Shock:	MIL-STD-810 +30G
Vibration:	MIL-STD-810, 20-2000Hz +6db/Octave 20Hz -70Hz; 0.04G2/Hz 70Hz -700Hz -6db/Octave 700-2,000Hz



M4U

M4BU - Backlit USB



M4

CORTRON Rugged HMI \$\$\$\$



FEATURES

- Cortron ForEver keys
- Durable metal enclosure with scratch resistant finish
- USB and PS/2 configurations available
- Sealed rain proof, spill proof/sand and dust proof
- IP65 and MIL-STD-810
- Optional Extreme High Shock Protection (+100gs)

COMPATIBLE

MR Series	KVM Consoles
MR2 Series	KVM Consoles
MK17 Series	KVM Consoles
RD3U Series	KVM Consoles
RD4U Series	Rackmount Keyboards

PARTNUMBER

XXXX	-	XXXX	XX	M4U	XXXX	XX	XX
Rack Drawer Unit Size		Unit Series & Depth	LCD Display	Keyboard & Mouse	Video/Switch Controller	Front Face	Lens Option



M6 Series

MIL-SPEC / 4 Button DuraTrack Ball

DITHD

DISPLAY INTEGRATION TECHNOLOGIES

SPECS

Grade:	MIL-SPEC / Rugged
Keys:	116
Pointer:	4 Button 2" DuraTrack Ball
Interface:	PS/2 (M6) / USB (M6U) / Backlit (M6BU)
Approvals:	MIL-STD-810 / IP65
Operating Temp:	-0° to +162°F (-40 to +71°C)
Storage Temp:	-67° to 185°F (-55 to 85°C)
Humidity:	95%
Shock:	MIL-STD-810 +30G
Vibration:	MIL-STD-810, 20-2000Hz +6db/Octave 20Hz -70Hz; 0.04G2/Hz 70Hz -700Hz -6db/Octave 700-2,000Hz



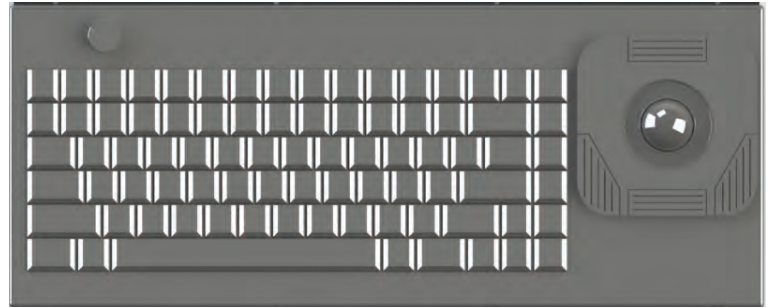
M6U

M6BU - Backlit USB



M6

CORTRON Rugged HMI \$\$\$\$



FEATURES

- Cortron ForEver keys
- Durable metal enclosure with scratch resistant finish
- USB and PS/2 configurations available
- Sealed rain proof, spill proof/sand and dust proof
- IP65 and MIL-STD-810
- Optional Extreme High Shock Protection (+100gs)

COMPATIBLE

MR2 Series	KVM Consoles
MK217 Series	KVM Consoles
RD3U Series	KVM Consoles
RD4U Series	Rackmount Keyboards

PARTNUMBER

XXXX	-	XXXX	XX	M6U	XXXX	XX	XX
Rack Drawer Unit Size		Unit Series & Depth	LCD Display	Keyboard & Mouse	Video/Switch Controller	Front Face	Lens Option



M7 Series

MIL-SPEC / Track Ball



DISPLAY INTEGRATION TECHNOLOGIES

SPECS

\$\$

Grade:	MIL-SPEC / Rugged NEMA 4X
Keys:	116
Pointer:	Integrated 25mm Trackball
Interface:	PS/2 (M7) or USB (M7U)
Approvals:	NEMA4X, UL60950, FCC Part 15 Class B
Operating Temp:	32° to 122°F (0 to 65°C)
Storage Temp:	-40° to 185°F (-40 to 85°C)
Humidity:	100% (when properly installed)
Shock:	50G Peak 11msec Duration, 3 axis
Vibration:	POWERSPECTRALDENSITY:0.04g2/Hz FREQUENCY RANGE: 20Hz - 2kHz DURATION Of TEST PER AXIS: 3 hour



M7U



M7

FEATURES

- 10-Key Numeric Pad, 24 Function Keys,
- 25mm Integrated Trackball with 3 buttons,
- MS Windows™ Function Keys,
- USB and PS/2 configurations available,
- Optional NVIS Compliant – Green B backlighting
- Optional CAC Card Reader on MR Series

COMPATIBLE

MR2 Series	KVM Consoles
MK17 Series	KVM Consoles
RD3U Series	KVM Consoles
RD4U Series	Rackmount Keyboards

PARTNUMBER

XXXX	-	XXXX	XX	M7U	XXXX	XX	XX
Rack Drawer Unit Size		Unit Series & Depth	LCD Display	Keyboard & Mouse	Video/Switch Controller	Front Face	Lens Option



KVMS-D1

DisplayPort KVM Switch



DISPLAY INTEGRATION TECHNOLOGIES



SPECS

Format:	DisplayPort 1.2
Link Rate:	5.4 Gbps/lane
Video Input:	(4) Display Port (female)
Resolution:	Up to 4K (3840x2160 @30Hz)
Bandwidth:	10.2Gbps
Signal Type:	USB 2.0, 1.1, and 1.0 w/ internal hub
Keyboard Input:	(4) USB Type B (female)
Front Panel:	<M1 & M2> Source Selection Buttons
RS-232:	DB9
Hot Keys:	Via Keyboard
Approvals:	UL, CE, ROHS Compliant
Operating Temp:	23° to 95°F (-5 to 35°C)
Storage Temp:	-4° to 185°F (-20 to 85°C)
Humidity:	up to 90% (No Condensation)



KVMS-D1 is a dedicated multi-platform KVM switch capable of managing four 4K computers through a single DisplayPort monitor, USB keyboard, USB mouse, and other USB 2.0 devices. DisplayPort is one of the latest options in screen connectivity that delivers top quality high-definition video, and this device is DisplayPort 1.2 compliant with support for screen resolutions up to 4K HD to (3840x2160 @30Hz). HDMI and DVI video connections are supported with the proper video converters, and the device is backwards compatible with prior DisplayPort versions.

CABLES

6 ft: 08-11191.06

10 ft: 08-11191.10

15 ft: 08-11191.15

Custom lengths available up to 20Feet Max



COMPATIBLE

RD1U Series	Rackmount KVM Consoles
RD2U Series	Rackmount KVM Consoles
RD3U Series	Rackmount KVM Consoles
MR Series	MIL-SPEC Rackmount KVM Consoles
MR2 Series	MIL-SPEC Rackmount KVM Consoles
RDKB Series	Rackmount Keyboards

FEATURES

- Zero pixel loss with TMDS signal correction
- Supports all USB 2.0 Devices
- Control Sun, Mac or PC computers from a common KVM console
- Compatible with all major software including Windows, Linux, Mac OS, Sun OS, Unix
- Rack mountable in a standard 19 inch rack
- Balanced stereo audio output
- RS-232 control for remote control
- Optional TCP/IP control
- Hot-key commands for quick channel selection.
- Complete keyboard emulation for error free booting
- Top quality 4K (3840x2160 @ 30Hz)

PARTNUMBER

XXXX	-	XXXX	XX	XXX	D1	XX	XX
Rack Drawer Unit Size		Unit Series & Depth	LCD Display	Keyboard & Mouse	Video/Switch Controller	Front Face	Lens Option



RD1U
Rackmount KVM Console



RD2U
Rackmount KVM Console



RD3U
Rackmount KVM Console



RDKB
Rackmount Keyboard

KVMS-D3

Secure DisplayPort KVM Switch



DISPLAY INTEGRATION TECHNOLOGIES

NIAP 3 Compliant



SPECS

Format:	Display-Port 1.2
Link Rate:	5.4 Gbps/lane
Video Input:	(4) Display Port (female)
Max Resolution:	Up to 4K (3840x2160 @30Hz)
Bandwidth:	10.2Gbps
Signal Type:	USB 2.0, 1.1 Emulation
Keyboard Input:	(4) USB Type B: Keyboard and Mouse (4) USB Type B: Configurable CAC (4) 1/8" Jack Rec: Audio In
KVM Button Panel:	Secure Channel Front Keypad & LED
RS-232:	Not Supported
Hot Keys:	Not Supported
Approvals:	UL, CE, ROHS Compliant
Operating Temp:	23° to 95°F (-5 to 35°C)
Storage Temp:	-4° to 185°F (-20 to 85°C)
Humidity:	up to 90% (No Condensation)

CABLES

6 ft: 08-11191.06

10 ft: 08-11191.10

15 ft: 08-11191.15

Custom lengths available up to 20Feet Max



COMPATIBLE

RD1U Series	Rackmount KVM Consoles
RD2U Series	Rackmount KVM Consoles
RD3U Series	Rackmount KVM Consoles
MR Series	MIL-SPEC Rackmount KVM Consoles
MR2 Series	MIL-SPEC Rackmount KVM Consoles
RDKB Series	Rackmount Keyboards



KVMS-D3 is a dedicated multi-platform NIAP Compliant KVM switch. Secure NIAP KVM Switch's are designed for use in secure defense and intelligence applications where sensitive data must be protected. This Switch is NIAP PP 3.0 Compliant and equipped with the highest security features that meet today's Information Assurance safe control standards. The switch prevents data leakage between computers that can run at different security levels, and eliminate any potential cyber threat. Emulation of keyboard and mouse also prevents direct connection between the peripherals and the connected computers, shielding systems from potential vulnerabilities.

KEY FEATURES

- NIAP 3 Compliant
- Advanced configurable CAC port
- Ultra Secure KVM Switch
- Non-reprogrammable ROM
- Active Anti-tamper switches
- Long-life internal Anti-tampering battery
- Absolute isolation - No data leakage between ports
- Supports Window, Mac and Linux OS
- Complete Keyboard and Mouse emulation shielding systems from potential Threats
- Top quality 4K (3840x2160 @ 30Hz)
- MST (Multi Stream Transport Support)
- Positive Retention, Mono Pole, USB-B Connector

PART NUMBER

XXXX	-	XXXX	XX	XXX	D3	XX	XX
Rack Drawer Unit Size		Unit Series & Depth	LCD Display	Keyboard & Mouse	Video/Switch Controller	Front Face	Lens Option



RD1U
Rackmount KVM Console



RD2U
Rackmount KVM Console



RD3U
Rackmount KVM Console



RDKB
Rackmount Keyboard

KVMS-D4

Secure DisplayPort KVM Switch



DISPLAY INTEGRATION TECHNOLOGIES

NIAP 4 Compliant



SPECS

Format:	Display-Port 1.2
Link Rate:	5.4 Gbps/lane
Video Input:	(4) Display Port (female)
Max Resolution:	Up to 4K (3840x2160 @60Hz)
Bandwidth:	10.2Gbps
Signal Type:	USB 2.0, 1.1 Emulation
Keyboard Input:	(4) USB Type B: Keyboard and Mouse (4) USB Type B: Configurable CAC (4) 1/8" Jack Rec: Audio In
KVM Button Panel:	Secure Channel Front Keypad & LED
RS-232:	Not Supported
Hot Keys:	Not Supported
Approvals:	UL, CE, ROHS Compliant
Operating Temp:	32° to 104°F (0 to 40°C)
Storage Temp:	-4° to 140°F (-20 to 60°C)
Humidity:	up to 80% (No Condensation)



KVMS-D4 is a dedicated multi-platform NIAP Compliant KVM switch. Secure NIAP KVM Switch's are designed for use in secure defense and intelligence applications where sensitive data must be protected. This Switch is NIAP PP 4.0 Compliant and equipped with the highest security features that meet today's Information Assurance safe control standards. The switch prevents data leakage between computers that can run at different security levels, and eliminate any potential cyber threat. Emulation of keyboard and mouse also prevents direct connection between the peripherals and the connected computers, shielding systems from potential vulnerabilities.

KEY FEATURES

- NIAP 4 Compliant
- Supports Windows, Mac and Linux OS
- Single-head Display-Port video interface
- 4K Ultra-HD resolution - supports up to 3840 x 2160 @ 60Hz
- Advanced configurable CAC port
- Computer interface isolation while powered or unpowered
- Ensures all user data is completely isolated and no data is ever stored
- No external interfaces can be used, only keyboard, mouse and CAC devices accepted
- Secure channel switching with leak prevention, no hotkeys
- Front panel tactile buttons for secure channel switching and LED channel indicators
- Peripheral and authentication ports isolation for secure usage
- Tamper evident label and anti-tampering technology
- No wireless devices connected
- Ensures only trusted admin gains access

CABLES

6 ft: 08-11191.06

10 ft: 08-11191.10

15 ft: 08-11191.15

Custom lengths available up to 20Feet Max



COMPATIBLE

RD1U Series	Rackmount KVM Consoles
RD2U Series	Rackmount KVM Consoles
MR Series	MIL-SPEC Rackmount KVM Consoles
MR2 Series	MIL-SPEC Rackmount KVM Consoles
RDKB Series	Rackmount Keyboards

PART NUMBER

XXXX	-	XXXX	XX	XXX	D4	XX	XX
Rack Drawer Unit Size		Unit Series & Depth	LCD Display	Keyboard & Mouse	Video/Switch Controller	Front Face	Lens Option



RD1U
Rackmount KVM Console



RD2U
Rackmount KVM Console



RDKB
Rackmount Keyboard

KVMS-E2/E4

VGA / PS/2 KVM Switch



DISPLAY INTEGRATION TECHNOLOGIES

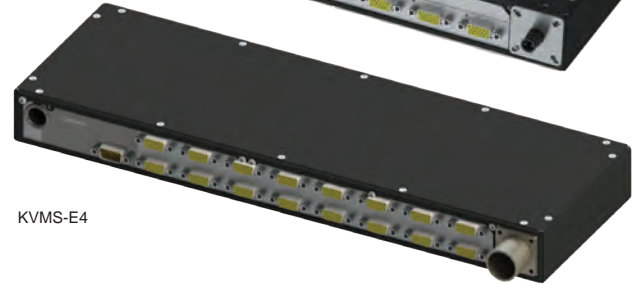


SPECS

Format:	VGA / USB and PS/2
Video Input:	(8) & (16) VGA and USB or PS/2
Max Resolution:	Up to 2048x1536
Signal Type:	USB / PS/2
Keyboard Input:	DB18 Connector via Cable
Front Panel:	Source Selection Buttons
Hot Keys:	Via Keyboard
Approvals:	UL, CE, ROHS Compliant
Operating Temp:	32° to 122°F (0 to 50°C)
Storage Temp:	-4° to 60°F (-20 to 60°C)
Humidity:	up to 80% (No Condensation)



KVMS-E2



KVMS-E4

The KVMS-E2 / KVMS-E4 switch allows as many as 16 switches that can be controlled from a single keyboard-monitor-mouse console. Additionally, the KVMS-E2 / KVMS-E4 features a compact design that integrates into RD1U / RD2U / RD3U / MR drawer racks.

Switching between computers can be easily accomplished either by manually pressing the front panel push button port LEDs, entering hotkey combinations from the keyboard, or via a menu driven multilingual on-screen display (OSD) system.

CABLES

PS/2 4 ft:	08-11004.04
PS/2 6 ft:	08-11004.06
PS/2 10 ft:	08-11004.10
USB 4 ft:	08-11033.04
USB 6 ft:	08-11033.06
USB 10 ft:	08-11033.10

Custom lengths available



PS/2 Cables



USB Cables

FEATURES

- Cascade to 2 levels – connect up to 16 switches
- Supports computers with PS/2 or USB keyboards and mice
- Supports Windows, Linux, UNIX, Mac, and Novell
- Auto PS/2 and USB interface detection
- Convenient computer switching via front panel pushbuttons, hotkeys, or multilingual on-screen display (OSD) menu
- Auto Scan feature for monitoring user-selected computers
- Broadcast mode – operations simultaneously performed on all selected computers

COMPATIBLE

RD1U Series	Rackmount KVM Consoles
RD2U Series	Rackmount KVM Consoles
MR Series	MIL-SPEC Rackmount KVM Consoles
MR2 Series	MIL-SPEC Rackmount KVM Consoles
RDKB Series	Rackmount Keyboards

PARTNUMBER

XXXX	-	XXXX	XX	XXX	E4	XX	XX
Rack Drawer Unit Size		Unit Series & Depth	LCD Display	Keyboard & Mouse	Video/Switch Controller	Front Face	Lens Option



RD1U
Rackmount KVM Console



RD2U
Rackmount KVM Console



RDKB
Rackmount Keyboard

KVMS-E3

VGA / USB KVM Switch (Legacy)



DISPLAY INTEGRATION TECHNOLOGIES



SPECS

Format:	VGA and USB
Video Input:	(8) VGA and USB (female)
Resolution:	Up to 2048x1536
Signal Type:	USB 2.0
Keyboard Input:	USB Type B Connector
Front Panel:	Source Selection Buttons
Hot Keys:	Via Keyboard
Approvals:	UL, CE, ROHS Compliant
Operating Temp:	32° to 122°F (0 to 50°C)
Storage Temp:	-4° to 60°F (-20 to 60°C)
Humidity:	up to 80% (No Condensation)



The KVMS-E3 is our Low Cost Entry Level VGA, USB KVM Switch. Setup is fast and easy; plugging cables into their appropriate ports is all that is needed. The switch supports both VGA and USB connections for the console and computers. The KVMS-E3 intercepts keyboard input directly, thus eliminating the need for any software configuration. Switching between computers can be easily accomplished either by manually pressing the front panel push button port LEDs, entering hotkey combinations from the keyboard, or via a menu driven multilingual on-screen display (OSD) system.

CABLES

6 ft: 08-11150.06

10 ft: 08-11150.10

Custom lengths available



VGA - USB KVM Cables

FEATURES

- Cascade to 2 levels – connect up to 8 switches
- Supports computers with VGA or USB keyboards and mice
- Supports Windows, Linux, UNIX, Mac, and Novell
- Auto VGA and USB interface detection
- Convenient computer switching via front panel pushbuttons, hotkeys, or multilingual on-screen display (OSD) menu
- Auto Scan feature for monitoring user-selected computers
- Broadcast mode – operations simultaneously performed on all selected computers

COMPATIBLE

RD1U Series	Rackmount KVM Consoles
RD2U Series	Rackmount KVM Consoles
MR Series	MIL-SPEC Rackmount KVM Consoles
MR2 Series	MIL-SPEC Rackmount KVM Consoles
RDKB Series	Rackmount Keyboards

PARTNUMBER

XXXX	-	XXXX	XX	XXX	E3	XX	XX
Rack Drawer Unit Size		Unit Series & Depth	LCD Display	Keyboard & Mouse	Video/Switch Controller	Front Face	Lens Option



RD1U
Rackmount KVM Console



RD2U
Rackmount KVM Console



RDKB
Rackmount Keyboard

KVMS-E3.1

VGA KVM Switch

DITHD

DISPLAY INTEGRATION TECHNOLOGIES



SPECS

Format:	VGA
Video Input:	(8) VGA (female)
Resolution:	Up to 2048x1536
Signal Type:	USB 2.0
Keyboard Input:	VGA Connector
Front Panel:	Source Selection Buttons
Hot Keys:	Via Keyboard
Approvals:	UL, CE, ROHS Compliant
Operating Temp:	32° to 122°F (0 to 50°C)
Storage Temp:	-4° to 60°F (-20 to 60°C)
Humidity:	up to 80% (No Condensation)



The KVMS-E3.1 is our VGA KVM Switch. Setup is fast and easy; plugging cables into their appropriate ports is all that is needed. The switch supports VGA connections for the console and computers. The KVMS-E3.1 intercepts keyboard input directly, eliminating the need for any software configuration. Switching between computers can be easily accomplished either by manually pressing the front panel push button port LEDs, entering hotkey combinations from the keyboard, or via a menu driven multilingual on-screen display (OSD) system.

CABLES

6 ft: 08-XXXX.06

10 ft: 08-XXXX.10

Custom lengths available



VGA - KVM Cables

FEATURES

- Cascade to 2 levels – connect up to 8 switches
- Supports computers with VGA or USB keyboards and mice
- Supports Windows, Linux, UNIX, Mac, and Novell
- Auto VGA and USB interface detection
- Convenient computer switching via front panel pushbuttons, hotkeys, or multilingual on-screen display (OSD) menu
- Auto Scan feature for monitoring user-selected computers
- Broadcast mode – operations simultaneously performed on all selected computers

COMPATIBLE

RD1U Series	Rackmount KVM Consoles
RD2U Series	Rackmount KVM Consoles
MR Series	MIL-SPEC Rackmount KVM Consoles
MR2 Series	MIL-SPEC Rackmount KVM Consoles
RDKB Series	Rackmount Keyboards

PARTNUMBER

XXXX	-	XXXX	XX	XXX	E3.1	XX	XX
Rack Drawer Unit Size		Unit Series & Depth	LCD Display	Keyboard & Mouse	Video/Switch Controller	Front Face	Lens Option



RD1U
Rackmount KVM Console



RD2U
Rackmount KVM Console



RDKB
Rackmount Keyboard

NIAP Compliant



SPECS

Format:	DVI, HDMI, VGA
Video Input:	(4) DVI-I Port (female)
Resolution:	Up to 2560x1600 @60Hz or 3840x2160 @30Hz
Signal Type:	USB 1.1
Keyboard Input:	USB Type-B
Front Panel:	Source Selection Buttons
Approvals:	UL, CE, ROHS Compliant
Operating Temp:	32° to 104°F (0 to 40°C)
Storage Temp:	-4° to 140°F (-20 to 60°C)
Humidity:	up to 80% (No Condensation)



The KVMS-G2 is a dedicated multi-platform KVM Switch capable of managing up to 4 different computers through Integrated Rack monitor, USB keyboard & mouse, a set of speakers and USB devices like printers, memory devices, scanners, or integrated CAC card reader. The video connectors on the unit are DVI-I, which allows support for HDMI DVI-D and VGA using inexpensive passive adapters or cables. Computers can be a mix of either DVI-D or HDMI or VGA monitor ports, providing Dynamic EDID support on most operating systems. Additionally, the KVMS-G2 features a compact design that integrates into RD1U / RD2U / RD3U / MR drawer racks.

CABLES

6 ft:	08-11062.06
10 ft:	08-11062.10
16 ft:	08-11062.16

Custom lengths available



DVI KVM Cables

COMPATIBLE

RD1U Series	Rackmount KVM Consoles
RD2U Series	Rackmount KVM Consoles
MR Series	MIL-SPEC Rackmount KVM Consoles
MR2 Series	MIL-SPEC Rackmount KVM Consoles
RDKB Series	Rackmount Keyboards

FEATURES

- NIAP Compliant
- Supports all major Operating Systems like Windows, Mac, Linux OS.
- Supports resolutions up to 2560x1600 @ 60Hz or 3840x2160 @30Hz
- Zero pixel loss with TMDS signal correction
- Supports additional USB devices like printers, scanners, web cameras and CAC Card Reader
- Stereo Audio support via Integrated Front Face Speakers or external Speakers
- Front panel keys for manual port selection
- Secure keyboard Mouse emulation
- Absolute Isolation - No data leakage between ports, non re-programmable ROM to better protect the switches function

PARTNUMBER

XXXX	-	XXXX	XX	XXX	G2	XX	XX
Rack Drawer Unit Size		Unit Series & Depth	LCD Display	Keyboard & Mouse	Video/Switch Controller	Front Face	Lens Option



RD1U
Rackmount KVM Console



RD2U
Rackmount KVM Console



RDKB
Rackmount Keyboard

NIAP Compliant



SPECS

Format:	DVI
Video Input:	(8) DVI-I Port (female)
Resolution:	Up to 2560x1600 @60Hz or 3840x2160 @30Hz
Signal Type:	USB 1.1
Keyboard Input:	USB Type-B
Front Panel:	Source Selection Buttons
Hot Keys:	Via Keyboard
Approvals:	UL, CE, ROHS Compliant
Operating Temp:	32° to 104°F (0 to 40°C)
Storage Temp:	-4° to 140°F (-20 to 60°C)
Humidity:	up to 80% (No Condensation)



The KVMS-G3 is a dedicated multi-platform KVM Switch capable of managing up to 8 different computers through a single monitor, USB keyboard & mouse, a set of speakers and USB devices like printers, memory devices, scanners, etc. The video connectors on the unit are DVI-I, which allows support for HDMI and VGA using inexpensive passive adapters or cables. When using a DVI or an HDMI monitor, computers can be a mix of either DVI or HDMI. When utilizing a VGA monitor, all computers must have a VGA/Analog video connection. Additionally, the KVMS-G3 features a compact design that integrates into / RD2U / MR2 Series drawer racks.

CABLES

6 ft:	08-11062.06
10 ft:	08-11062.10
16 ft:	08-11062.16

Custom lengths available



DVI KVM Cables

FEATURES

- NIAP Compliant
- Supports all major Operating Systems like Windows, Mac, Linux, Sun, Unix, DOS, etc.
- Supports resolutions up to 2560x1600 @ 60Hz
- Zero pixel loss with TMDS signal correction
- Supports additional USB devices like printers, scanners, web cameras, CAC Card Reader
- Stereo Audio support via Integrated Front Face Speakers or external Speakers
- Front panel keys for manual port selection
- Hot-key commands for quick port selection
- RS-232 for remote control
- Complete keyboard emulation for error free booting

COMPATIBLE

RD2U Series	Rackmount KVM Consoles
MR2 Series	MIL-SPEC Rackmount KVM Consoles

PARTNUMBER

XXXX	-	XXXX	XX	XXX	G3	XX	XX
Rack Drawer Unit Size		Unit Series & Depth	LCD Display	Keyboard & Mouse	Video/Switch Controller	Front Face	Lens Option



RD2U Rackmount KVM Console



MR2U Rackmount KVM Console



SPECS

Format:	RJ-45 / IP
Link Rate:	5.4 Gbps/lane
Video Input:	(8) or (16) RJ-45 (female)
Resolution:	Up to 1920x1200 @60Hz)
Signal Type:	USB 2.0, 1.1, and 1.0 w/ internal hub
Keyboard Input:	(2) USB Type B (female)
Hot Keys:	Via Keyboard
OSD:	[CTRL][CTRL] or [SCL LOCK][SCL LOCK]
Approvals:	UL, CE, ROHS Compliant
Operating Temp:	32° to 104°F (0 to 40°C)
Storage Temp:	-4° to 140°F (-20 to 60°C)
Humidity:	up to 80% (No Condensation)



KVMS-18



KVMS-16

Compact, high-density, RJ-45 connectors and CAT 5e/6 cable make for a compact, efficient, wiring configuration, while the use of PS/2 and USB KVM Adapter Cables to link to the computers, permits any combination of PCs, Macs, Sun computers, and serial devices to coexist on the installation.

Video Input	KVM IP Input	Part Number
DisplayPort / USB	RJ45 / CAT5 / CAT6	05-17169
VGA / PS/2	RJ45 / CAT5 / CAT6	05-17120
DVI-D / USB	RJ45 / CAT5 / CAT6	05-17166
VGA / USB	RJ45 / CAT5 / CAT6	05-17170
HDMI / USB	RJ45 / CAT5 / CAT6	05-17168
USB-C	RJ45 / CAT5 / CAT6	05-17183

FEATURES

- Simple Installation and Operation
- Single Console Control
- Scalability
- Compatible with all major software including Windows, Linux, Mac OS, Sun OS, Unix
- Space-Saving RJ-45 Connectors and Cat5e/6 Cabling
- KVM Adapter Cables to Connect to Servers and Devices
- Superior Video Quality
- Hot Pluggable
- KVM Adapter Cables

COMPATIBLE

RD1U Series	Rackmount KVM Consoles
RD2U Series	Rackmount KVM Consoles
MR Series	MIL-SPEC Rackmount KVM Consoles
MR2 Series	MIL-SPEC Rackmount KVM Consoles
RDKB Series	Rackmount Keyboards

PART NUMBER

XXXX-XXX	XX	XXX	XXX	18	XXX
Rack Drawer / Chassis	Rack Drawer Depth	Display Size	Keyboard & Mouse	KVM Switch	Video Controller



RD1U
Rackmount KVM Console



RD2U
Rackmount KVM Console



RDKB
Rackmount Keyboard



DisplayPort / USB / USB Modules

RJ45 | CAT5 | CAT6
KVM CPU Modules

DisplayPort/USB 05-17169



VGA / PS/2 Modules

RJ45 | CAT5
KVM CPU Modules

VGA / PS/2 05-17120



DVI-D / USB Modules

RJ45 | CAT5 | CAT6
KVM CPU Modules

DVI-D / USB 05-17166



VGA / USB Modules

RJ45 | CAT5
KVM CPU Modules

VGA / USB 05-17170



HDMI / USB Modules

RJ45 | CAT5 | CAT6
KVM CPU Modules

HDMI / USB 05-17168



USB-C Modules

RJ45 | CAT5 | CAT6
KVM CPU Modules

USB-C 05-17183



KVMS-K1

VGA KVM Switch

DITHD

DISPLAY INTEGRATION TECHNOLOGIES



SPECS

Format:	VGA
Video Input:	DB-18 KVM Cable
Resolution:	Up to 2048x1536 @60Hz
Signal Type:	USB 2.0
Keyboard Input:	DB-18 KVM Cable
OSD:	On Screen Display Controls
Hot Keys:	Via Keyboard
Approvals:	UL, CE, ROHS Compliant
Operating Temp:	32° to +122°F (0 to 50°C)
Storage Temp:	-4° to 140°F (-20 to 60°C)
Humidity:	up to 80% (No Condensation)



The KVMS-K1 switch allows as many as 4 CPU's that can be controlled from the Integrated Rack drawers keyboard-monitor-mouse console. Additionally, the KVMS-K1 features a compact design that integrates into RD1U / RD2U / RD3U / MR drawer racks.

Setup is fast and easy; plugging cables into their appropriate ports is all that is needed. The switch supports VGA connections for the console and computers. The KVMS-K1 intercepts keyboard input directly, thus eliminating the need for any software configuration. Switching between computers can be easily accomplished either by entering hotkey combinations from the keyboard, or via a menu driven multilingual on-screen display (OSD) system.

CABLES

6 ft: 08-11062.06

4 cable sets included



DB-18, VGA KVM Cables

FEATURES

- **Audio-enabled** – Audio Front Face Speakers can be integrated with this switch into your KVM Rack Drawer for audio support. or external speaker can be added.
- **Independent switching of KVM, VGA, and Audio focus**
- **Computer selection via multilingual OSD (On Screen Display), or hotkeys Commands**
- **Multiplatform support** – Windows, Mac, and Sun
- **Console mouse port emulation / bypass feature supports full mouse driver and multifunction mice**
- **Complete keyboard emulation for error free booting**
- **Easy installation** – no software required

COMPATIBLE

RD1U Series	Rackmount KVM Consoles
RD2U Series	Rackmount KVM Consoles
MR Series	MIL-SPEC Rackmount KVM Consoles
MR2 Series	MIL-SPEC Rackmount KVM Consoles
RDKB Series	Rackmount Keyboards

PART NUMBER

XXXX	-	XXXX	XX	XXX	K1	XX	XX
Rack Drawer Unit Size		Unit Series & Depth	LCD Display	Keyboard & Mouse	Video/Switch Controller	Front Face	Lens Option



RD1U
Rackmount KVM Console



RD2U
Rackmount KVM Console



RDKB
Rackmount Keyboard



SPECS

Format:	HDMI
Video Input:	(16) HDMI Port (female)
Resolution:	Up to 1920x1200 @60Hz
Signal Type:	USB 2.0
Keyboard Input:	USB Type-B
OSD:	On Screen Display Control Menu
Hot Keys:	Via Keyboard
Approvals:	UL, CE, ROHS Compliant
Operating Temp:	32° to 122°F (0 to 50°C)
Storage Temp:	-4° to 140°F (-20 to 60°C)
Humidity:	up to 80% (No Condensation)



The KVMS-02 16-port USB HDMI KVM Switch is a multi-purpose appliance that consolidates access and control of up to 16 HDMI computers from a single USB keyboard, USB mouse, and an Integrated Rack monitor console.

In addition, the KVMS-02 features multi-display functionality for our RD3U Rack Drawers, which enables the use of standard USB cables to stack up to 16 switches in a multi-display installation where each computer is fitted with multiple video cards. It allows users to contrast, analyze and monitor video output in convenient ways, substantially simplifying the working environment. The KVMS-02 provides multimedia keyboard support and is audio enabled. Users can listen to the audio output of each computer on two sets of speakers (on a one at-a-time basis). Audio Front Face Speakers can be integrated with this switch into your KVM Rack Drawer for audio Support.

CABLES

6 ft: 08-11153.06A

Two cable sets included



HDMI KVM Cables

FEATURES

- Cascade to 2 levels – connect up to 16 additional switches
- Supports computers with USB keyboards and mice
- Supports Windows, Linux, Mac, and Sun
- Auto USB interface detection
- Convenient computer switching via, or multilingual on-screen display (OSD) menu
- Auto Scan feature for monitoring user-selected computers
- Broadcast mode – operations simultaneously performed on all selected computers
- Admin Account – can be set up to control who has access to what resources, Back up the system and set passwords.

COMPATIBLE

RD2U Series	Rackmount KVM Consoles
MR2 Series	MIL-SPEC Rackmount KVM Consoles



RD2U
Rackmount KVM Console



MR2U
Rackmount KVM Console

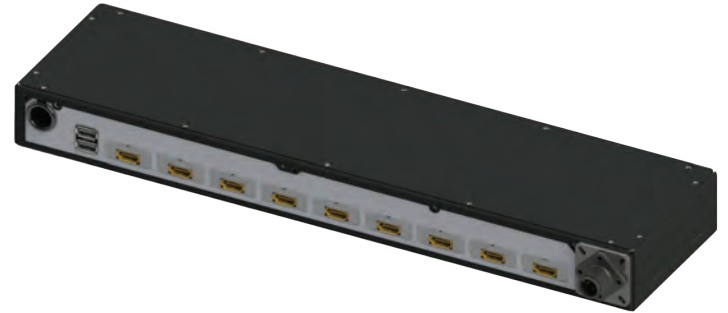
PARTNUMBER

XXXX	-	XXXX	XX	XXX	G3	XX	XX
Rack Drawer Unit Size		Unit Series & Depth	LCD Display	Keyboard & Mouse	Video/Switch Controller	Front Face	Lens Option



SPECS

Format:	HDMI
Video Input:	(8) HDMI Port (female)
Resolution:	Up to 4K (3840x2160 @30Hz)
Signal Type:	USB
Keyboard Input:	USB
Hot Keys:	NONE
OSD:	[CTRL][CTRL] or [SCL LOCK][SCL LOCK]
Approvals:	UL, CE, ROHS Compliant
Operating Temp:	-58° to 176°F (-50 to 80°C)
Storage Temp:	-58° to 176°F (-50 to 80°C)
Humidity:	up to 80% (No Condensation)



KVMS-03.1 provides seamless HDMI signal switching between up to 8 PCs or other HDMI enabled devices and allows users to share USB peripherals from a single console. The KVMS-03.1 provides enhanced independent switching via front panel pushbuttons or keyboard hotkeys and features Video DynaSync technology to ensure that HDMI display resolution is always optimized. With integrated digital audio, the KVMS-03.1 also allows users to experience high definition sound.

CABLES

- 6 ft: 08-11149.06
- 10 ft: 08-11149.10
- 16 ft: 08-11149.16



COMPATIBLE

RD1U Series	Rackmount KVM Consoles
RD2U Series	Rackmount KVM Consoles
MR Series	MIL-SPEC Rackmount KVM Consoles
MR2 Series	MIL-SPEC Rackmount KVM Consoles
RDKB Series	Rackmount Keyboards

FEATURES

- Connect up to 8 CPU's
- Supports computers USB keyboards, mice, and CAC card reader
- Supports Windows, Linux, UNIX, Mac, and Novell
- Convenient computer switching via front panel pushbuttons, hotkeys, or multilingual on-screen display (OSD)
- Auto Scan feature for monitoring user-selected computers
- Broadcast mode – operations simultaneously performed on all selected computers

PART NUMBER

XXXX-XXX	XX	XXX	XXX	031	XXX
Rack Drawer / Chassis	Rack Drawer Depth	Display Size	Keyboard & Mouse	KVM Switch	Video Controller



RD1U
Rackmount KVM Console



RD2U
Rackmount KVM Console



RDKB
Rackmount Keyboard

KVMS-04

HDMI KVM Switch

DITHD

DISPLAY INTEGRATION TECHNOLOGIES



SPECS

Format:	HDMI
Video Input:	(4) HDMI Port (female)
Resolution:	Up to 1920x1200 @60Hz
Signal Type:	USB 2.0
Keyboard Input:	USB Type-B
Front Panel:	Source Selection Buttons
Hot Keys:	Via Keyboard
Approvals:	UL, CE, ROHS Compliant
Operating Temp:	32° to 122°F (0 to 50°C)
Storage Temp:	-4° to 140°F (-20 to 60°C)
Humidity:	up to 80% (No Condensation)



KVMS-04 HDMI KVM Switches provide the required functionality for today's multimedia environment. Combining a 4-port switch with a 2-port USB 2.0 hub, the KVMS-04 provides seamless HDMI signal switching between 4 PCs or other HDMI enabled devices, such as gaming consoles, and allows users to share USB peripherals from a single console. The KVMS-04 provides enhanced independent switching via front panel push-buttons and keyboard hotkeys, and features Video DynaSync technology to ensure that HDMI display resolution is always optimized. With integrated digital audio, the KVMS-04 also allows users to experience high definition sound, such as Dolby True HD and DTS HD Master Audio. Audio Front Face Speakers can be integrated with this switch into your KVM Rack Drawer for audio Support.

CABLES

6 ft: 08-11153.06A

Four cable sets included
Custom lengths available



HDMI KVM Cables

FEATURES

- Supports computers with USB keyboards and mice
- Supports Windows, Linux, Mac
- Auto USB interface detection
- Convenient computer switching via front panel pushbuttons, hotkeys
- Auto Scan feature for monitoring user-selected computers
- Independent Switching of KVM console, USB peripheral and audio focus via hot key commands.

COMPATIBLE

RD1U Series	Rackmount KVM Consoles
RD2U Series	Rackmount KVM Consoles
MR Series	MIL-SPEC Rackmount KVM Consoles
MR2 Series	MIL-SPEC Rackmount KVM Consoles
RDKB Series	Rackmount Keyboards

PART NUMBER

XXXX	-	XXXX	XX	XXX	04	XX	XX
Rack Drawer Unit Size		Unit Series & Depth	LCD Display	Keyboard & Mouse	Video/Switch Controller	Front Face	Lens Option



RD1U
Rackmount KVM Console



RD2U
Rackmount KVM Console



RDKB
Rackmount Keyboard

NIAP Compliant



SPECS

Format:	HDMI 2.1
Video Input:	Locking (4) HDMI Port (female)
Resolution:	Up to 4K (3840x2160 @30Hz)
Signal Type:	USB 2.0, 1.1, and 1.0 w/ internal hub
Keyboard Input:	USB Type-B
Front Panel:	Push Button with LED Indicator
Hot Keys:	Via Keyboard
RS-232:	DB9 Female - 115200 N,8,1, No flow control
Approvals:	UL, CE, ROHS Compliant
Operating Temp:	32° to 104°F (0 to 40°C)
Storage Temp:	-4° to 140°F (-20 to 60°C)
Humidity:	up to 80% (No Condensation)



KVMS-04.2 HDMI KVM Switches provide the required functionality for today's High Performance multimedia environment. Combining a 4-port switch with a 2-port USB 2.0 hub, the KVMS-04.2 provides seamless HDMI signal switching between up to 4 PCs or other HDMI enabled devices, such as Video surveillance equipment, and allows users to share USB peripherals from a single console. The KVMS-04.2 provides enhanced independent switching via front panel pushbuttons and keyboard hotkeys or RS232, and features Video DynaSync technology to ensure that HDMI display resolution is always optimized. With integrated digital audio, the KVMS-04.2 also allows users to experience high definition sound, such as Dolby True HD and DTS HD Master Audio.

CABLES

6 ft: 08-11147.06

10 ft: 08-11147.10

with Locking HDMI Boot
Custom lengths available



Locking HDMI KVM Cables

FEATURES

- NIAP Compliant
- Connect up to 4 CPU's
- Supports computers USB keyboards, mice, and CAC card reader
- Supports Windows, Linux, UNIX, Mac, and Novell
- Convenient computer switching via front panel pushbuttons, hotkeys, RS232 or multilingual on-screen display (OSD)
- Auto Scan feature for monitoring user-selected computers
- Broadcast mode – operations simultaneously performed on all selected computers

COMPATIBLE

RD1U Series	Rackmount KVM Consoles
RD2U Series	Rackmount KVM Consoles
MR Series	MIL-SPEC Rackmount KVM Consoles
MR2 Series	MIL-SPEC Rackmount KVM Consoles
RDKB Series	Rackmount Keyboards

PARTNUMBER

XXXX	-	XXXX	XX	XXX	04.2	XX	XX
Rack Drawer Unit Size		Unit Series & Depth	LCD Display	Keyboard & Mouse	Video/Switch Controller	Front Face	Lens Option



RD1U
Rackmount KVM Console



RD2U
Rackmount KVM Console



RDKB
Rackmount Keyboard

KVMS-08.2

HDMI MIL-SPEC KVM Switch

DITHD

DISPLAY INTEGRATION TECHNOLOGIES

NIAP Compliant



SPECS

Format:	HDMI 2.1
Video Input:	Locking (8) HDMI Port (female)
Resolution:	Up to 4K (3840x2160 @30Hz)
Signal Type:	USB 2.0, 1.1, and 1.0 w/ internal hub
Keyboard Input:	USB Type-B
Front Panel:	Push Button with LED Indicator
Hot Keys:	Via Keyboard
RS-232:	DB9 Female - 115200 N,8,1, No flow control
Approvals:	UL, CE, ROHS Compliant
Operating Temp:	32° to +104°F (0 to 40°C)
Storage Temp:	-4° to 140°F (-20 to 60°C)
Humidity:	up to 80% (No Condensation)



KVMS-08.2 HDMI KVM Switches provide the required functionality for today's High Performance multimedia environment. Combining a 8-port switch with a 2-port USB 2.0 hub, the KVMS-08.2 provides seamless HDMI signal switching between up to 8 PCs or other HDMI enabled devices, such as Video Surveillance equipment, and allows users to share USB peripherals from a single console. The KVMS-08.2 provides enhanced independent switching via front panel pushbuttons and keyboard hotkeys or RS232, and features Video DynaSync technology to ensure that HDMI display resolution is always optimized. With integrated digital audio, the KVMS-08.2 also allows users to experience high definition sound, such as Dolby True HD and DTS HD Master Audio.

CABLES

6 ft: 08-11147.06

10 ft: 08-11147.10

with Locking HDMI Boot
Custom lengths available



Locking HDMI KVM Cables

FEATURES

- NIAP Compliant
- Connect up to 8 CPU's
- Supports computers USB keyboards, mice, and CAC card reader
- Supports Windows, Linux, UNIX, Mac, and Novell
- Convenient computer switching via front panel pushbuttons, hotkeys, RS232 or multilingual on-screen display (OSD)
- Auto Scan feature for monitoring user-selected computers
- Broadcast mode – operations simultaneously performed on all selected computers

COMPATIBLE

MR Series	MIL-SPEC Rackmount KVM Consoles
MR2 Series	MIL-SPEC Rackmount KVM Consoles
MK Series	Rackmount Keyboards

PARTNUMBER

XXXX	-	XXXX	XX	XXX	08.2	XX	XX
Rack Drawer Unit Size		Unit Series & Depth	LCD Display	Keyboard & Mouse	Video/Switch Controller	Front Face	Lens Option



MR (MIL-SPEC)
Rackmount KVM Console



MR2 (MIL-SPEC)
Rackmount KVM Console



MK (MIL-SPEC)
Rackmount Keyboard

KVMS-G1

DVI KVM Switch (Legacy)



DISPLAY INTEGRATION TECHNOLOGIES



SPECS

Format:	DVI
Video Input:	(4) DVI Port (female)
Resolution:	Up to 1920 x 1200 @60Hz
Signal Type:	USB 2.0
Keyboard Input:	USB Type-B
Front Panel:	Source Selection Buttons
Hot Keys:	Via Keyboard
Approvals:	UL, CE, ROHS Compliant
Operating Temp:	32° to 104°F (0 to 40°C)
Storage Temp:	-4° to 140°F (-20 to 60°C)
Humidity:	up to 80% (No Condensation)



The KVMS-G1 is a dedicated multi-platform KVM Switch capable of managing up to 4 different computers through a single monitor, USB keyboard & mouse, a set of speakers and USB devices like printers, memory devices, scanners, etc. The video connectors on the unit are DVI-I, which allows support for HDMI and VGA using inexpensive passive adapters or cables. When using a DVI or an HDMI monitor, computers can be a mix of either DVI or HDMI. When utilizing a VGA monitor, all computers must have a VGA/Analog video connection.

CABLES

6 ft: 08-11061.06A

4 cable sets included with switch



DVI KVM Cables

FEATURES

- Supports all major Operating Systems like Windows, Mac, Linux, Sun, Unix, DOS, etc.
- Supports resolutions up to 1920x1200 @ 60Hz
- Zero pixel loss with TMDS signal correction
- Supports additional USB 2.0 devices like printers, scanners, web cameras and more
- Stereo Audio support
- Hot-key commands for quick port selection
- Complete keyboard emulation for error free booting

COMPATIBLE

RD1U Series	Rackmount KVM Consoles
RD2U Series	Rackmount KVM Consoles
MR Series	MIL-SPEC Rackmount KVM Consoles
MR2 Series	MIL-SPEC Rackmount KVM Consoles
RDKB Series	Rackmount Keyboards

PART NUMBER

XXXX	-	XXXX	XX	XXX	G1	XX	XX
Rack Drawer Unit Size		Unit Series & Depth	LCD Display	Keyboard & Mouse	Video/Switch Controller	Front Face	Lens Option



RD1U
Rackmount KVM Console



RD2U
Rackmount KVM Console



RDKB
Rackmount Keyboard

V33x / V34x

FHD / 4K UHD Display Controller Boards

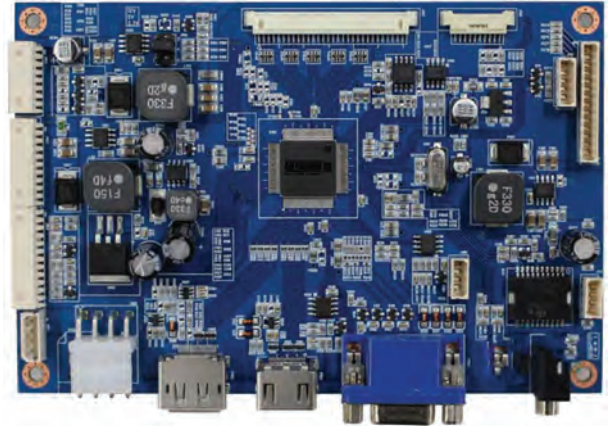
DITHD

DISPLAY INTEGRATION TECHNOLOGIES

SPECS

V33x - FHD

Part Number:	V33x
Display Colors:	262K/16.2M
Output:	LVDS / SPDIF
Input:	DisplayPort / HDMI / VGA
OSD:	Full Control of All Parameters
Resolution :	Up To 1080x1920 @ 60Hz
Operating Temp:	-20° to +70°C
Storage Temp:	-20° to +70°C
Power:	12V DC / 24V DC



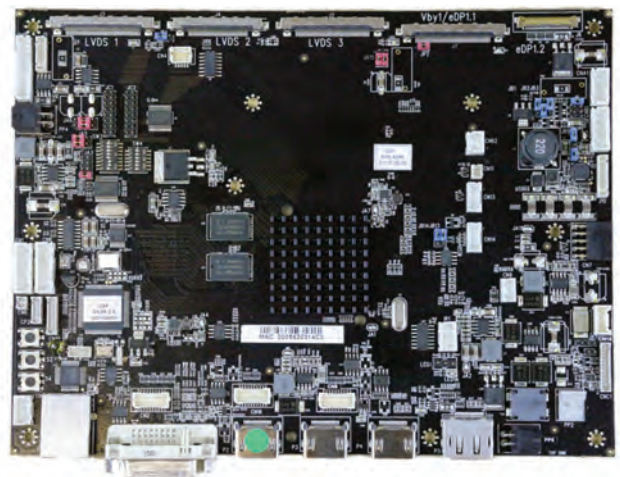
PART NUMBER

XXXX-XXX	XX	XXX	XXX	XXX	V33x
Rack Drawer / Chassis	Rack Drawer Depth	Display Size	Keyboard & Mouse	KVM Switch	Video Controller

SPECS

V34x - 4K UHD

Part Number:	V34x
Display Colors:	1.06 Billion
Output:	LVDS / SPDIF
Input:	DisplayPort / HDMI / DVI
OSD:	Full Control of All Parameters
Resolution :	Up To 4096x2160 @ 60Hz
Operating Temp:	-20° to +70°C
Storage Temp:	-20° to +70°C
Power:	12V DC / 24V DC



PART NUMBER

XXXX-XXX	XX	XXX	XXX	XXX	V34x
Rack Drawer / Chassis	Rack Drawer Depth	Display Size	Keyboard & Mouse	KVM Switch	Video Controller

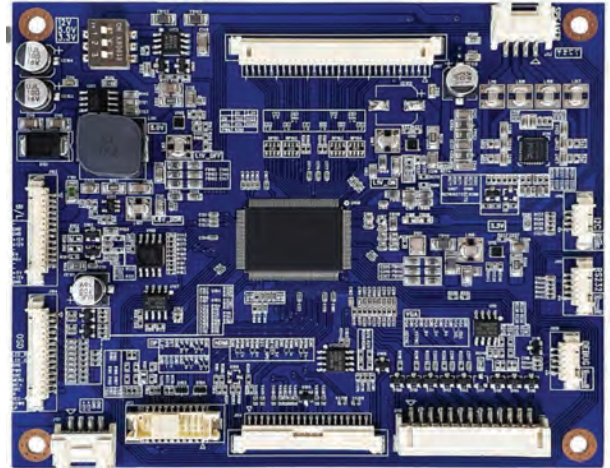
V35x / V36x

FHD / 4K UHD Display Controller Boards

SPECS

V35x - FHD

Part Number:	V35x
Display Colors:	262K/16.2M
Output:	LVDS / SPDIF
Input:	DisplayPort / HDMI / DVI / VGA
OSD:	Full Control of All Parameters
Resolution :	Up To 1080x1920 @ 60Hz
Operating Temp:	-20° to +70°C
Storage Temp:	-20° to +70°C
Power:	12V DC



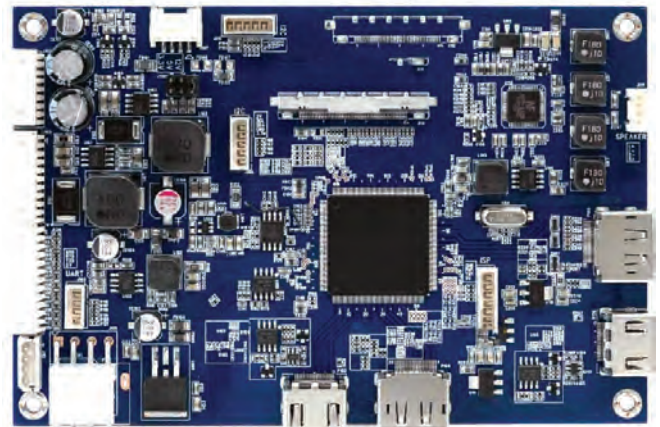
PART NUMBER

XXXX-XXX	XX	XXX	XXX	XXX	V35x
Rack Drawer / Chassis	Rack Drawer Depth	Display Size	Keyboard & Mouse	KVM Switch	Video Controller

SPECS

V36x - 4K UHD

Part Number:	V36x
Display Colors:	1.06 Billion
Output:	LVDS / SPDIF
Input:	DisplayPort / HDMI
OSD:	Full Control of All Parameters
Resolution :	Up To 4096x2160 @ 60Hz
Operating Temp:	-20° to +70°C
Storage Temp:	-20° to +70°C
Power:	12V DC / 24V DC



PART NUMBER

XXXX-XXX	XX	XXX	XXX	XXX	V36x
Rack Drawer / Chassis	Rack Drawer Depth	Display Size	Keyboard & Mouse	KVM Switch	Video Controller

V37x / V38x

FHD / 4K UHD Display Controller Boards

DITHD

DISPLAY INTEGRATION TECHNOLOGIES

SPECS

V37x - FHD

Part Number:	V37x
Display Colors:	262K/16.2M
Output:	LVDS / SPDIF
Input:	DisplayPort / HDMI / DVI / VGA
OSD:	Full Control of All Parameters
Resolution :	Up To 1200x1920 @ 60Hz
Operating Temp:	0° to +60°C
Storage Temp:	-10° to +85°C
Power:	12V DC



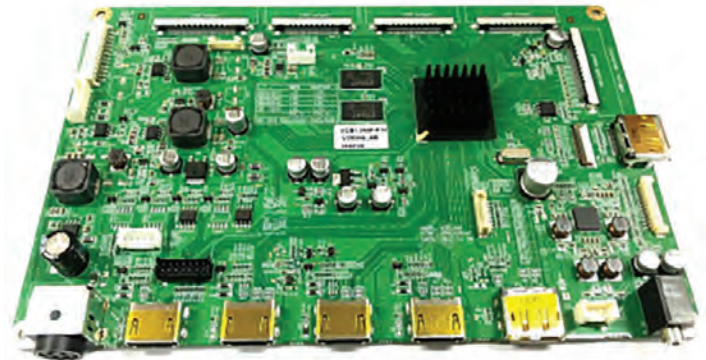
PART NUMBER

XXXX-XXX	XX	XXX	XXX	XXX	V37x
Rack Drawer / Chassis	Rack Drawer Depth	Display Size	Keyboard & Mouse	KVM Switch	Video Controller

SPECS

V38x - 4K UHD

Part Number:	V38x
Special Features:	DP MST(Multi Stream, up to FHD 4EA) or Daisy chain Output
Display Colors:	1.06 Billion
Output:	LVDS / SPDIF
Input:	DisplayPort / HDMI
OSD:	Full Control of All Parameters
Resolution :	Up To 4096x2160 @ 60Hz
Operating Temp:	-20° to +70°C
Storage Temp:	-20° to +70°C
Power:	12V DC / 24V DC



PART NUMBER

XXXX-XXX	XX	XXX	XXX	XXX	V38x
Rack Drawer / Chassis	Rack Drawer Depth	Display Size	Keyboard & Mouse	KVM Switch	Video Controller

V39x / V40x

FHD / 4K UHD Display Controller Boards



DISPLAY INTEGRATION TECHNOLOGIES

SPECS

V39x - FHD

Part Number:	V39x
Special Features:	DP MST(Multi Stream, up to FHD 4EA) or Daisy chain Output
Display Colors:	1.06 Billion / 10 bit
Output:	LVDS / SPDIF
Input:	DisplayPort / HDMI / DVI
OSD:	Full Control of All Parameters
Resolution :	Up To 4096x2160 @ 60Hz
Operating Temp:	-20° to +70°C
Storage Temp:	-20° to +70°C
Power:	12V DC / 24V DC



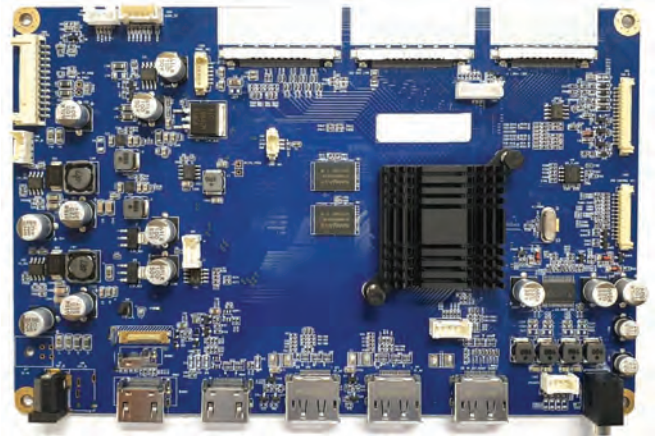
PART NUMBER

XXXX-XXX	XX	XXX	XXX	XXX	V39x
Rack Drawer / Chassis	Rack Drawer Depth	Display Size	Keyboard & Mouse	KVM Switch	Video Controller

SPECS

V40x - 4K UHD

Part Number:	V40x
Special Features:	DP MST(Multi Stream, up to FHD 4EA) or Daisy chain Output DP MST / DP Clone / Fast Swap
Display Colors:	1.06 Billion
Output:	LVDS / SPDIF
DisplayPort Input:	DP1.2/4K2K@60Hz 2Port
HDMI Input:	HDMI 2.0 /4K2K@60Hz 2Port
OSD:	Full Control of All Parameters
Resolution :	Up To 4096x2160 @ 60Hz
Operating Temp:	-10° to +70°C
Storage Temp:	-10° to +70°C
Power:	12V DC / 24V DC



PART NUMBER

XXXX-XXX	XX	XXX	XXX	XXX	V40x
Rack Drawer / Chassis	Rack Drawer Depth	Display Size	Keyboard & Mouse	KVM Switch	Video Controller

V41x / V42x

FHD Display Controller Boards

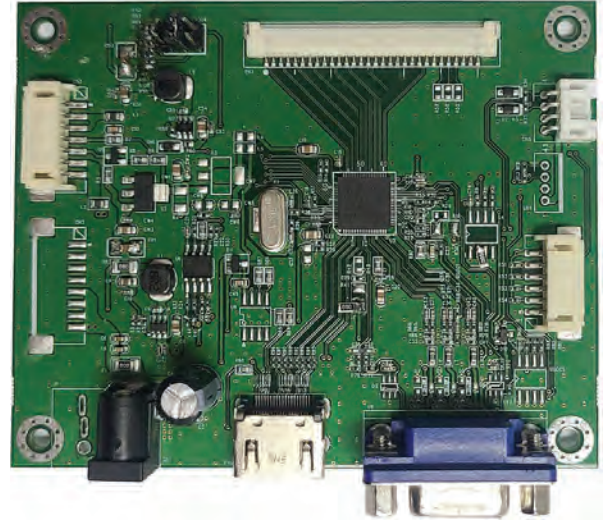
DITHD

DISPLAY INTEGRATION TECHNOLOGIES

SPECS

V41x - FHD

Part Number:	V41x
Display Colors:	16.2M
Output:	LVDS / SPDIF
Input:	HDMI / VGA
OSD:	Full Control of All Parameters
Resolution :	Up To 1080x1920 @ 60Hz
Operating Temp:	-20° to +70°C
Storage Temp:	-20° to +70°C
Power:	12V DC / 24V DC



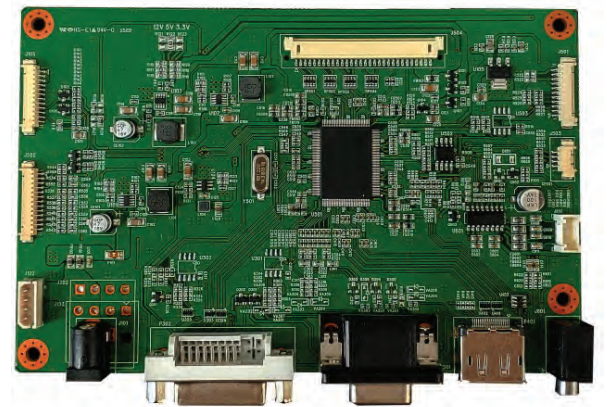
PART NUMBER

XXXX-XXX	XX	XXX	XXX	XXX	V41x
Rack Drawer / Chassis	Rack Drawer Depth	Display Size	Keyboard & Mouse	KVM Switch	Video Controller

SPECS

V42x - FHD

Part Number:	V42x
Display Colors:	16.2M
Output:	LVDS / SPDIF
Input:	DVI / DisplayPort / VGA
OSD:	Full Control of All Parameters
Resolution :	Up To 1200x1920 @ 60Hz
Operating Temp:	-10° to +70°C
Storage Temp:	-10° to +70°C
Power:	12V DC / 24V DC



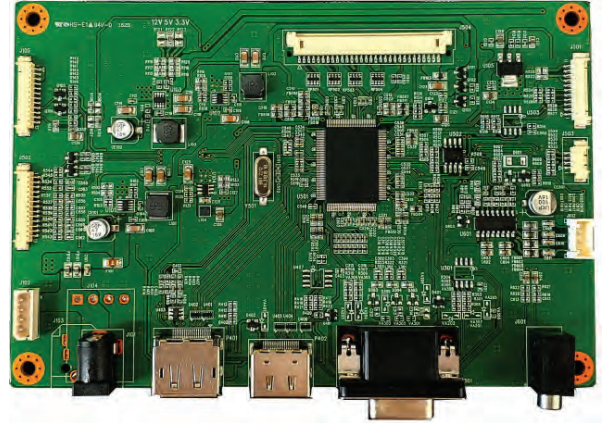
PART NUMBER

XXXX-XXX	XX	XXX	XXX	XXX	V42x
Rack Drawer / Chassis	Rack Drawer Depth	Display Size	Keyboard & Mouse	KVM Switch	Video Controller

SPECS

V43x - FHD

Part Number:	V43x
Display Colors:	16.2M
Output:	LVDS / SPDIF
Input:	HDMI / DisplayPort / VGA
OSD:	Full Control of All Parameters
Resolution :	Up To 1200x1920 @ 60Hz
Operating Temp:	-10° to +70°C
Storage Temp:	-10° to +70°C
Power:	12V DC / 24V DC



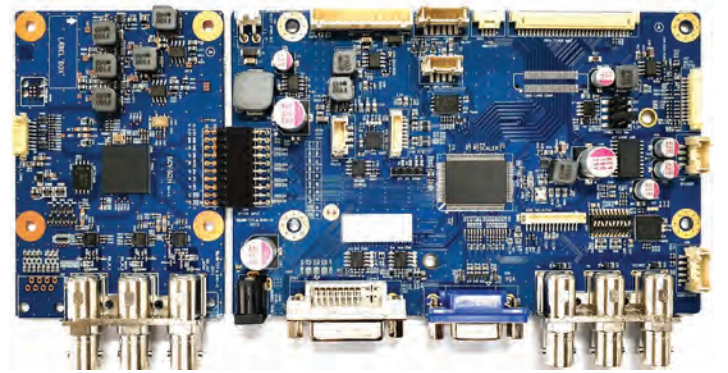
PART NUMBER

XXXX-XXX	XX	XXX	XXX	XXX	V43x
Rack Drawer / Chassis	Rack Drawer Depth	Display Size	Keyboard & Mouse	KVM Switch	Video Controller

SPECS

V44x - FHD (DICOM)

Part Number:	V44x
Special Features:	Vectorscope / Waveform / 3G+6G SDI
Display Colors:	16.2M
Output:	LVDS / SPDIF
Input:	DVI / VGA / SDI / HDMI
OSD:	Full Control of All Parameters
Resolution :	Up To 1200x1920 @ 60Hz
Operating Temp:	-10° to +70°C
Storage Temp:	-10° to +70°C
Power:	12V DC / 24V DC



PART NUMBER

XXXX-XXX	XX	XXX	XXX	XXX	V44x
Rack Drawer / Chassis	Rack Drawer Depth	Display Size	Keyboard & Mouse	KVM Switch	Video Controller

V45x / V46x

FHD / 4K UHD Display Controller Boards

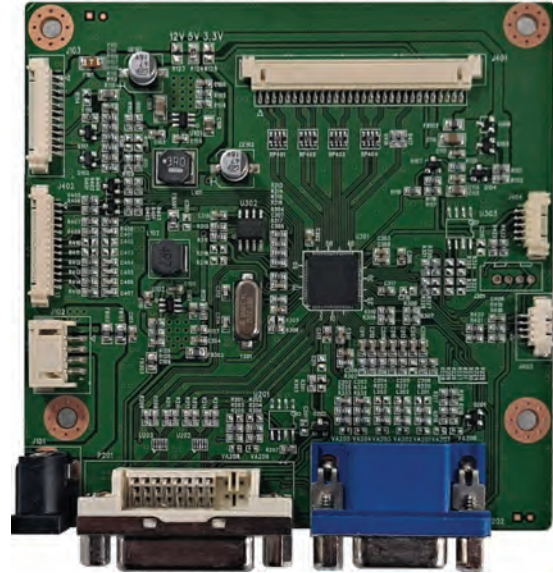
DITHD

DISPLAY INTEGRATION TECHNOLOGIES

SPECS

V45x - FHD

Part Number:	V45x
Display Colors:	16.2M
Output:	LVDS / SPDIF
Input:	DVI / VGA
OSD:	Full Control of All Parameters
Resolution :	Up To 1200x1920 @ 60Hz
Operating Temp:	-10° to +70°C
Storage Temp:	-10° to +70°C
Power:	12V DC / 24V DC



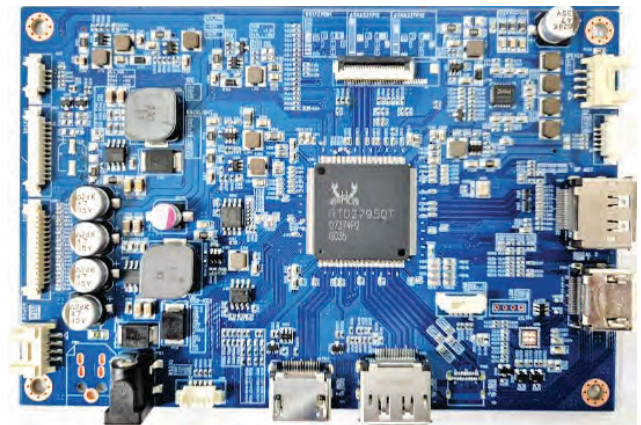
PART NUMBER

XXXX-XXX	XX	XXX	XXX	XXX	V45x
Rack Drawer / Chassis	Rack Drawer Depth	Display Size	Keyboard & Mouse	KVM Switch	Video Controller

SPECS

V46x - 4K UHD

Part Number:	V46x
Display Colors:	1.06 Billion
Output:	LVDS / SPDIF
Input:	HDMI / DisplayPort
OSD:	Full Control of All Parameters
Resolution :	Up To 4096x2160 @ 60Hz
Operating Temp:	-20° to +70°C
Storage Temp:	-20° to +70°C
Power:	12V DC / 24V DC



PART NUMBER

XXXX-XXX	XX	XXX	XXX	XXX	V46x
Rack Drawer / Chassis	Rack Drawer Depth	Display Size	Keyboard & Mouse	KVM Switch	Video Controller

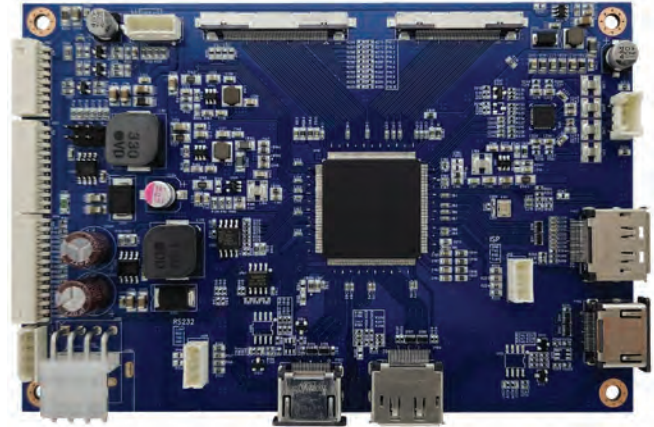
V47x / V49x

4K UHD Display Controller Board

SPECS

V47x - FHD

Part Number:	V47x
Display Colors:	16.2M
Output:	LVDS / SPDIF
Input:	DP MST (Multi-Stream) / HDMI
OSD:	Full Control of All Parameters
Resolution :	Up To 1600x2560 @ 60Hz
Operating Temp:	-20° to +70°C
Storage Temp:	-20° to +70°C
Power:	12V DC / 24V DC



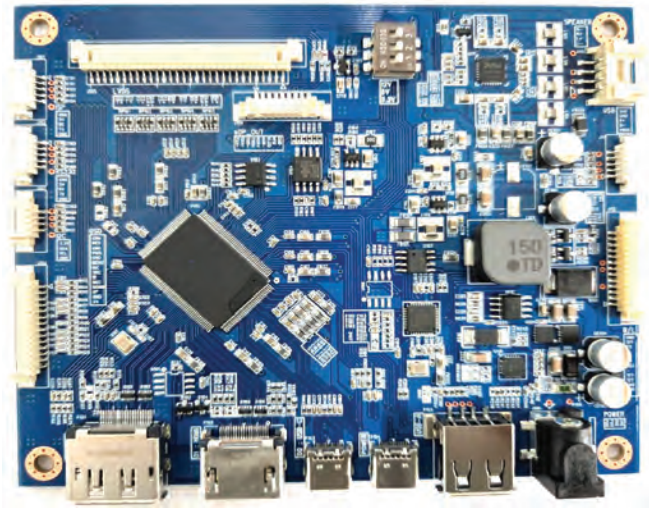
PART NUMBER

XXXX-XXX	XX	XXX	XXX	XXX	V47x
Rack Drawer / Chassis	Rack Drawer Depth	Display Size	Keyboard & Mouse	KVM Switch	Video Controller

SPECS

V49x - FHD

Part Number:	V49x
Display Colors:	16.2M
Output:	LVDS / SPDIF
Input:	USB-C / DisplayPort / HDMI
OSD:	Full Control of All Parameters
Resolution :	Up To 1080x1920 @ 60Hz
Operating Temp:	-20° to +70°C
Storage Temp:	-20° to +70°C
Power:	12V DC



PART NUMBER

XXXX-XXX	XX	XXX	XXX	XXX	V49x
Rack Drawer / Chassis	Rack Drawer Depth	Display Size	Keyboard & Mouse	KVM Switch	Video Controller