

19" Rack Mount and Transit Case Alluminum Chassis Design

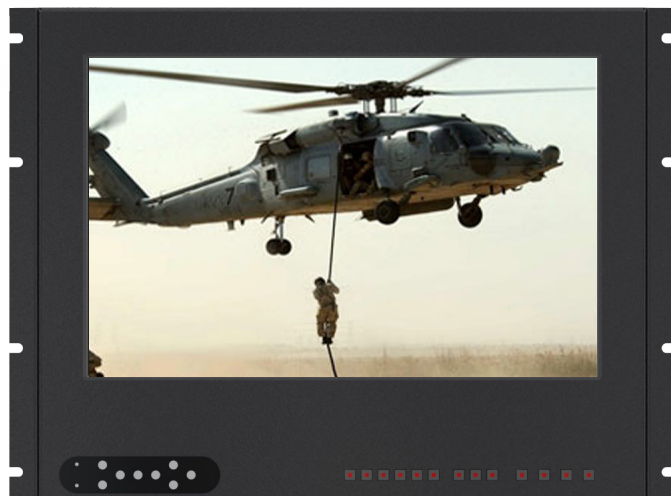
The DTS-RAXx Series is a high-performance, all-aluminum 8U rack-mount display designed to fit standard 19" racks or portable transit cases. It is available with 17.3", 19", and 20" LCD panels, offering high contrast ratios and wide viewing angles for superior image quality.

With a slim profile of just 3" in depth, this display is an ideal solution for rack, panel, in-wall, or kiosk installations. It supports a wide range of applications, including industrial, commercial, broadcast, home automation, and military environments.

Touchscreen options include Surface Capacitive, Resistive, and Projected Capacitive (PCAP) technologies, with both serial and USB interface choices available.



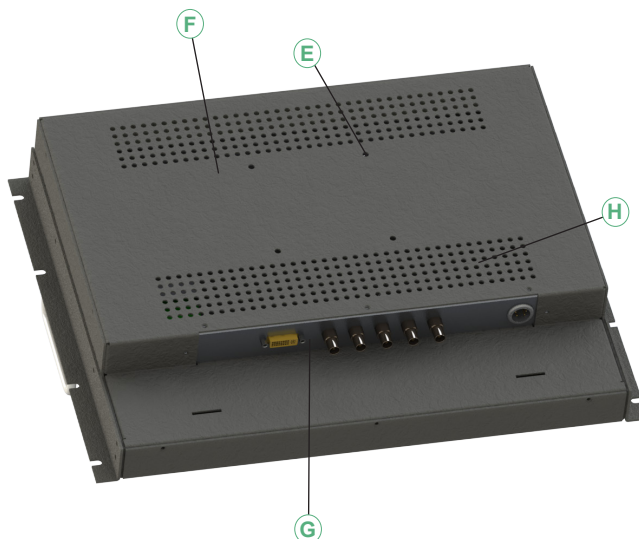
DTS-RA20HB



DTS-RA173W



DTS-RAXx Shown with Articulating Arm



FEATURES

- A** LED Backlit LCDs
- B** Optional Anti Reflective Glass Lens with Options
- C** Optional High Brigh LCD
- D** Optional PCAP Touch
- E** VESA Mount Pattern
- F** Rugged Aluminum welded Construction
- G** Multiple Industrial Grade Controller Options
- H** Ambient Air Cooled

WHY CHOOSE THE DTS 4K?

- Rugged All Aluminum Construction
- Multiple Industrial and Military Grade controllers to choose from
- Customizable Modular Design
- Optional Articulating Arm Mount
- Optional High Bright Panel
- Optional Optically Bonded Lens
- Touch Options Available

VIDEO CONTROLLERS

V35x Rugged Embedded Controller

- Max Resolution 1920x1200 60hz
- Input Options Available: VGAX1, Display Port x1 (HDMI, DVI-D, or 3G-SDI pick only 1)
- Designed to Meet Shock and Vibe Requirements
- Command and Controls: Consolidated OSD Buttons on Front
- Optional 3G-SDI Interface can be Integrated

V43x Rugged FHD Controller

- Max Resolution 1920x1200 60hz
- Input Options Available: HDMI x1, VGAX1, Display Port x1
- Designed to Meet Shock and Vibe Requirements
- Command and Controls: Consolidated OSD Buttons on Front

LCD OPTIONS

173HB FHD 1920 x 1080 (Max Res) 17.3 Wide LED Backlit LCD w/ Anti-Glare

- Viewing Angles: 80L/80R/60U/80D
- Contrast Ratio: 1000:1
- Brightness: 1500 NITS
- Response Time: 40ms
- Surface Finish: Anti Reflective Glass Lens with Options
- Color: 16.7M, 72% NTSC
- Operating Temp: 0°C to 70°C
- Storage Temp: -20°C to 70°C

20HB UXGA 1600x1200 (Max Res)

20.1 LED Backlit LCD w/ Anti-Glare

- Viewing Angles: 89/89/89/89
- Contrast Ratio: 800:1
- Brightness: 1000 NITS
- Response Time: 8ms
- Surface Finish: Anti Reflective Glass Lens with Options
- Color: 10bit (1.7B), 98% NTSC
- Operating Temp: 0°C to 50°C
- Storage Temp: -20°C to 60°C

19HB SXGA 1280x1024 (Max Res)

19 LED Backlit LCD w/ Anti-Glare

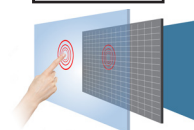
- Viewing Angles: 85/85/80/80
- Contrast Ratio: 1000:1
- Brightness: 1600 NITS
- Response Time: 10ms
- Surface Finish: Anti Reflective Glass Lens with Options
- Color: 16.7M, 70% NTSC
- Operating Temp: -30°C to 70°C
- Storage Temp: -30°C to 70°C

Optional Equipment

Rack Mount Articulating Arm



PCAP Touch



*Other Controller Cards Available with Multiple Options

*Other Panels and lens Enhancement Available



SERIES DISPLAY PROJECT REV
DTS-RA 20HB .XXXX .xx

20HB, 20Lx 173W, 173HB
19L, 19HB

► Custom Options Available On All DITHD Models

SPECIFICATIONS

- Dimensions: Varies By Configuration
- Weight: Less than 15 LBS (DTS-RA20HB)
- Power Consumption: Less than 55W

Values are approximate and vary based on configuration

Specifications

Detailed Specifications are for the: **DTS-RA20HB**
We can supply Detailed Specs for
other Monitors upon Request



LCD Characteristics:

Screen Spec:	20HB , a-Si TFT LCD
Backlight Type:	LED
Resolution:	1600x1200
Contrast Ratio:	800:1
Brightness (cd/m2):	1000
View Angles (H/V):	89/89/89/89
Pixel Size (HxV) mm:	0.255×0.255 mm
Max. Color:	16.7M
MTBF (hrs):	50,000
Response Time (ms):	8
Lens Treatment:	Antiglare, Hard Coating (3H)
Lens Enhancment:	Optional Optical Bonding
Touch:	Optional (Resistive or PCAP)
Color Gamet (NTSC):	70%

Input Signals:

VGA:	DB15 Male
HDMI or Other:	Standard HDMI, DVI, Or SDI
Display Port:	Standard Connector
USB:	USB 2.0 Type A

Power Specifications:

DC Power Input:	18VDC (80 Watts)
Connector:	XLR 4 Pin
AC Power Supply:	UL Listed AC/DC Brick

Mechanical and Environment:

Height:	14"
IP Protect:	TBD, Based On Requirements
Mounting:	19" Rack Mount 8U
Construction:	Aluminum Housing with black powder coating
Operating Temperature:	0°C ~ 50°C
Storaging Temperature:	-20°C ~ 60°C
Operating Humidity:	10% - 90%, non -condensing
Anti-Vibration:	5 - 500 Hz / 1 Grms PTP
Anti-Shock:	100G / Peak (11 ms)
Physical Dimension (WxHxD):	19" x 14" x 3.5" (in)
Packing Dimension (WxHxD):	22"x22"x6" (in)
Net Weight / Gross Weight:	(15Lbs/22Lbs)
Certification and Approvals:	UL/CE/ FCC RoHs
Altitude Test:	10,000/40,000 ft (Operational/No-Operational)

User Controls Interface:

Power ON / OFF via Front Button
Power Mode Status LED Indicator
OSD (On Screen Display) Buttons



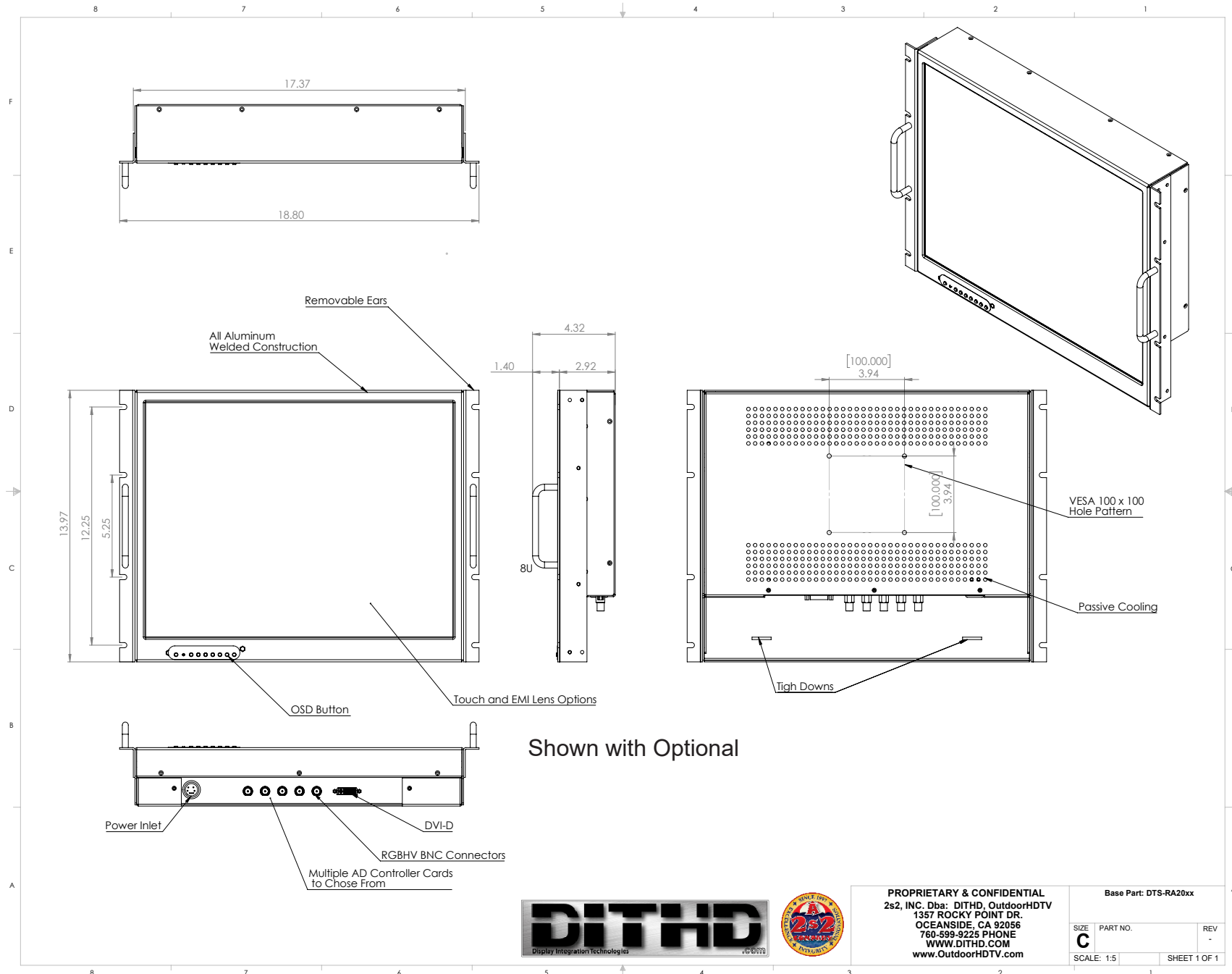
Display Integration Technologies | The Worlds Most Configurable Monitors
1357 Rocky Point Drive, Oceanside CA 92056 | 760.599.9225 | www.DITHD.com | sales@dithd.com



Mechanical Drawing

Samples of some of the Custom Projects we have done for our customers

Mechanical drawings and 3D Solid Models are available upon request. Contact your sales representative for details.



PROPRIETARY & CONFIDENTIAL
2s2, INC. Dba: DITHD, OutdoorHDTV
1357 ROCKY POINT DR.
OCEANSIDE, CA 92056
760-599-9225 PHONE
WWW.DITHD.COM
www.OutdoorHDTV.com

Base Part: DTS-RA20xx

SIZE	PART NO.	REV
C		-
SCALE: 1:5	SHEET 1 OF 1	



Display Integration Technologies | The Worlds Most Configurable Monitors
1357 Rocky Point Drive, Oceanside CA 92056 | 760.599.9225 | www.DITHD.com | sales@dithd.com

